

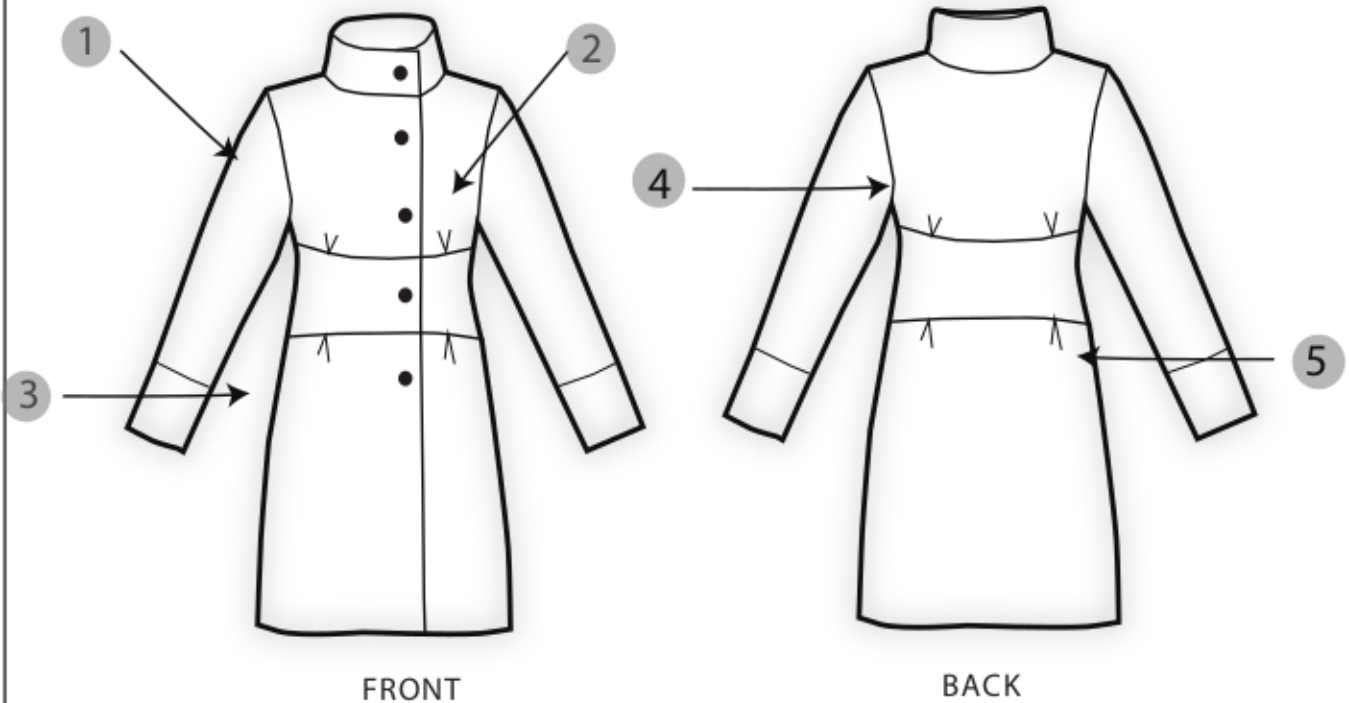
COAT

That coat is made from different fabric pieces and it's designed to use leftovers from your fabric stash. You can easily build a stay that will match with your other sewn garment.

Now you can use all of your best loved scraps!

FABRIC

Recommended woven fabric: wool, velvet, jacquard, tweed



BODY MEASUREMENTS (CMS&INCHES)

SIZE		XS	S	M	L
Bust	cm		84~88	92~96	96~100
	inch		33~34	36~37	37~39
Waist	cm		68~72	76~80	80~84
	inch		26~28	29~31	31~33
Hip	cm		90~97	101~105	109~114
	inch		35~38	39~41	42~44

TOOLS

- PINS
- HAND SEWING NEEDLES
- FABRIC SCISSORS
- SEAM RIPPER
- THREAD
- TAPE MEASURE
- MARKING PEN
- SEWING MACHINE

FABRIC SCRAPS REQUIRED

- FABRIC A (center front & back) 100 cm
- FABRIC B (right side front & left side) 50 cm
- FABRIC C 50 cm
- FABRIC D 50 cm
- FUSING 50 cm