

# [ mocha ]

b a b y + k i d s



## HARRIET BLOUSE

[www.mochapattern.com](http://www.mochapattern.com)





©2018 ithinksew.com, All rights reserved.

No part of this publication may be reproduced, distributed, or transmitted in any form or by any means, including photocopying, or other electronic or mechanical methods, without the prior written permission of the editor, except in the case of brief quotations embodied in critical reviews and certain other noncommercial uses permitted by copyright law.

The pattern is restricted to personal uses only.

CONTACT US

For general inquiries, write to [info@ithinksew.com](mailto:info@ithinksew.com)



# NEW

## HARRIET BLOUSE



SIZE: 3M, 6M, 9M, 12M, 18M, 24M

BEGINNER FRIENDLY PATTERN

The Harriet Blouse is a simple and basic puffed sleeve blouse for your little one! A classic design that never goes out of style! Due to its simple and adorable look it can easily match any bottom wear. Decorate the top piece with ribbons and corsages on special occasions and more! Start this classic and adorable blouse today!

## MATERIALS

### SUGGESTED FABRIC

Light weight cotton, Light weight linen or linen cotton, Voile, Lawn cotton, Cotton lace

### TOOL LIST

Ruler, Scissors, Chalk pencil, Pencil, Sewing machine, Pins, Needle, Shape tool, Safety Pin

### OTHERS

(1) Spool of coordinating thread  
(5-8) 10 mm (3/8") Buttons or snap

\* All units are in inches.

\* 5/8" seam allowance included.

\* 1 1/2" hem included

\* A4 and letter size patterns both provided.

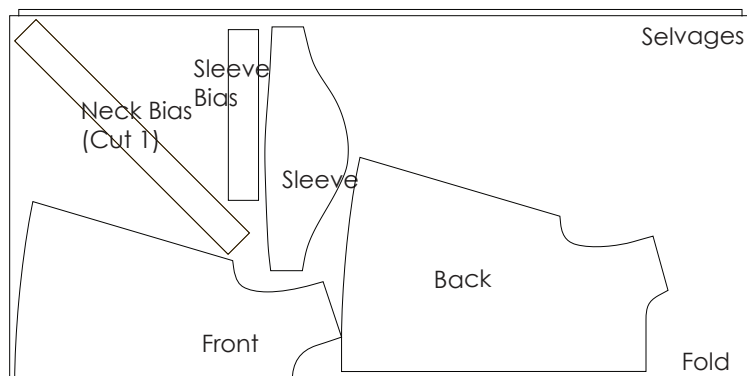
## How Many Yard You Need

	44"	58"	Unit
	Blouse	Blouse	
3M	1	2/3	Yard
6M	1	2/3	Yard
9M	1	2/3	Yard
12M	1	2/3	Yard
18M	1	2/3	Yard
24M	1	2/3	Yard

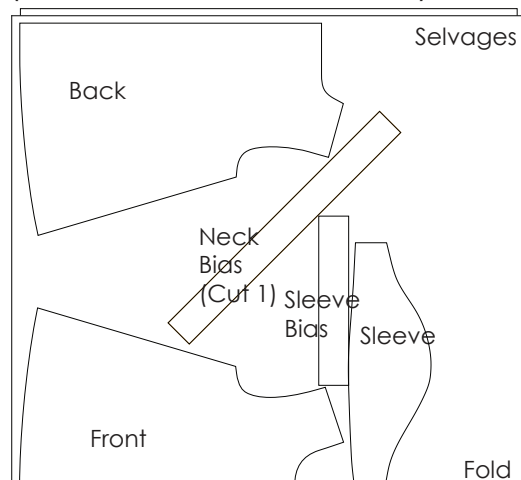
## Size Chart (Unit: Inches)

US Size	Body-bust
3M	18 1/2
6M	19 1/4
9M	20 1/4
12M	21
18M	21 1/4
24M	22 1/4

## CUTTING LAYOUT



44"-wide fabric suggested cutting layout  
(3M, 6M, 9M, 12M, 18M, 24M)



58"-wide fabric suggested cutting layout  
(3M, 6M, 9M, 12M, 18M, 24M)

## SIZE CHART

Age	Height		Chest		Hip	
1-3 month	22.25 in	56 cm	17.75 in	45 cm	18.25 in	46 cm
3-6 month	24.5 in	62 cm	18.5 in	47 cm	19 in	48 cm
6-9 month	25.75 in	68 cm	19.25 in	49 cm	19.75 in	50 cm
9-12 month	29.75 in	74 cm	20.25 in	51 cm	20.5 in	52 cm
12-18 month	31.5 in	80 cm	21 in	53 cm	22.25 in	54 cm
18-24 month	34 in	86 cm	21.75 in	55 cm	22.75 in	56 cm
2 years	36.25 in	92 cm	22.25 in	56 cm	23.75 in	57.6 cm
3 years	38.75 in	98 cm	22.5 in	57 cm	24 in	59.2 cm
4 years	41 in	104 cm	23 in	58 cm	24 in	60.8 cm
5 years	43.5 in	110 cm	23.25 in	59 cm	24.75 in	62.4 cm
6 years	45.75 in	116 cm	23.75 in	60 cm	25.25 in	64 cm
7 years	48 in	122 cm	24.5 in	62 cm	26.25 in	66.5 cm
8 years	50.5 in	128 cm	25.25 in	64 cm	27.25 in	69 cm
9 years	52.75 in	134 cm	26 in	66 cm	28.25 in	71.5 cm
10 years	55.25 in	140 cm	26.75 in	68 cm	29.15 in	74 cm
11 years	57.5 in	146 cm	28.5 in	72 cm	30.75 in	78 cm
12 years	60 in	152 cm	30 in	76 cm	32.25 in	82 cm
13 years	62.25 in	158 cm	31.5 in	80 cm	34 in	88 cm
14 years	64.75 in	164 cm	33 in	84 cm	35.5 in	90 cm
15 years	67 in	170 cm	34.75 in	88 cm	37 in	94 cm
16 years	69.5 in	176 cm	36.25 in	92 cm	38.75 in	98 cm





[www.mochapattern.com](http://www.mochapattern.com)