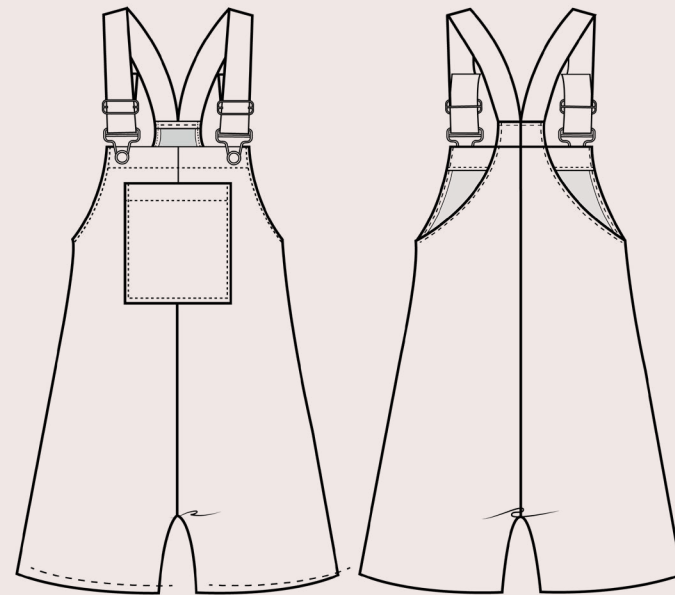




XS - XL
34 - 42

Dungarees

Tutorial & Sewing Pattern



MATERIAL

» For printing and gluing the pattern:
Scissors, adhesive tape and enough
printing paper in (DIN A4 or
US Letter) in the printer

» Sewing mashine
Tip: if you have an overlock machine
and feel comfortable with it, you are
welcome to use it.

» Fabric scissors

» Ruler

» Measuring tape to determine the
correct size

» Matching thread

» Headed pins

» Iron

» Fabric recommendation:

Linen, e.g. Ramie

Cotton, e.g. Cord or Denim

Adittonally:

» Buckles for the closure:

This pattern is made for 4cm wide bu-
ckles. For lighter fabrics (such as this
Linen fabric here right) you can also
use 3cm wide buckles. Then simply
shorten the straps by one centimeter
in width.

» Buttons for the closure:

The Buttons can be bought to match
the buckles or you can also use
trouser buttons

LEGAL INFORMATION

Thank you for purchasing a MiY Sewing Pattern and thank you for respecting the copyright. This pattern is intended exclusively for private purposes, i.e. for the production of individual pieces. The sale as well as the passing on (exchange, copy) is not permitted. If you have any questions, please contact me:

hello@makeityourstheLabel.com



Instagram: [@makeityourstheLabel](https://www.instagram.com/makeityourstheLabel)

Website: www.miythelabel.com

Pinterest: [Make it yours - the Label](https://www.pinterest.com/makeityourstheLabel/)

CHOOSE THE RIGHT SIZE

For the finished piece to fit perfectly on you, it is necessary that you take your measurements exactly! Make sure you measure horizontally and do not hold the tape measure too tight or too loose. Ideally it should still be possible to move it back and forth.

You already know your exact measurements? Perfect, then you can choose the right size in the charts below.

FINISHED GARMENT SIZES

In this table you will find the measurements of the finished garment:

	EU XS UK 6 US 4	EU S UK 8 US 6	EU M UK 10 US 8	EU L UK 12 US 10	EU XL UK 14 US 12
BUST (cm)	87	92	97	102	107
inch	34.3	36.2	38.2	40.2	42.1
WAIST (cm)	85,5	90,5	95,5	100,5	105,5
inch	33.8	35.8	37.7	39.7	41.7
HIPS (cm)	97	102	107	112	117
inch	38.2	40.2	42.1	44.1	46.1

BODY MEASUREMENTS TABLE

The finished measurements correspond approximately to the following body measurements:

	EU XS UK 6 US 4	EU S UK 8 US 6	EU M UK 10 US 8	EU L UK 12 US 10	EU XL UK 14 US 12
BUST (cm)	68-78	78-88	88-98	98-108	108-118
inch	26.7-30.7	30.7-34.6	34.6-38.6	38.6-42.5	42.5-46.5
WAIST (cm)	52-62	62-72	72-82	82-92	92-102
inch	20.5-24.4	24.4-28.3	28.3-32.2	32.2-36.2	36.2-40.2
HIPS (cm)	76-86	86-96	96-106	106-116	116-126
inch	29.9-33.8	33.8-37.8	37.8-41.7	41.7-45.7	45.7-49.6

FABRIC CONSUMPTION

	XS 34	S 36	M 38	L 40	XL 42
cm	140	140	150	180	180
inch	55.1	55.1	59.1	70.9	70.9