



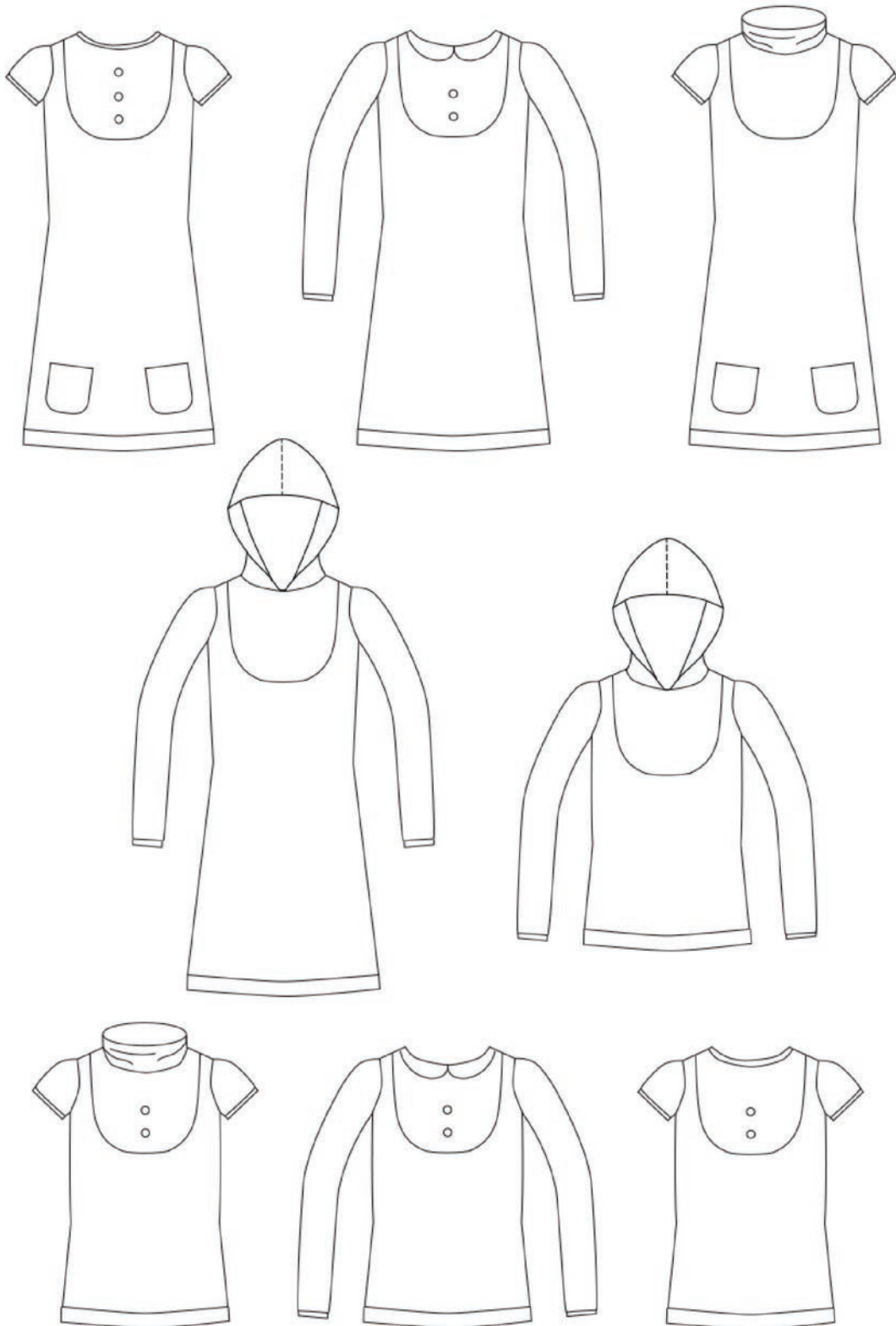
creative sewing lab



EU sizes
32 - 52

DRESS & SHIRT "MATHILDA"

• Sewing pattern & instructions •





- Peter Pan collar: thin fusable interlining such as H180, ca. 33cm x 40cm
- Hood: optional 2 eyelets and 1 m cord, 2 squares from VegaTex, small remnant of thin interlining H200

Which size should I choose?

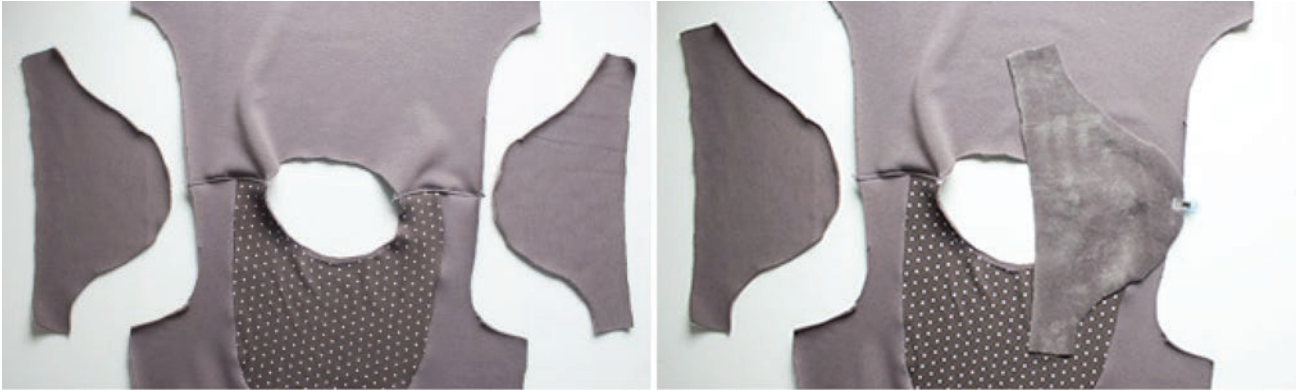
You can use sweat, cozy knit, fleece & co. for creating an autumn/winter dress or shirt. If you want to sew with jersey and thin knit fabrics please choose one size smaller. If you are unsure about your size use the following sizing chart (finished garment) for orientation.

Size of the finished garment:

EU size	32	34	36	38	40	42	44	46	48	50	52
UK size	6	8	10	12	14	16	18	20	22	24	26
US size	4	6	8	10	12	14	16	18	20	22	24
Bust (centimetres)	86	90	94	98	102	107	112	118	124	130	136
Bust (yards)	0,94	0,98	1,03	1,07	1,12	1,17	1,2	1,3	1,35	1,42	1,49
Bust (inch)	33,86	35,4	37	38,6	40,16	42,13	44,09	46,5	48,82	51,18	53,54
Waist (centimetres)	80	84	88	92	96	101	106	112	118	124	130
Waist (yards)	0,87	0,92	0,96	1	1,05	1,1	1,17	1,2	1,3	1,35	1,42
Waist (inch)	31,5	33,07	34,65	36,22	37,8	39,76	41,73	44,09	46,46	48,82	51,18
Hips (centimetres)	90	94	99	102	106	111	116	122	128	134	140
Hips (yards)	0,98	1,03	1,08	1,12	1,16	1,21	1,27	1,33	1,4	1,47	1,53
Hips (inch)	35,4	37	38,98	40,16	41,73	43,7	45,67	48,03	50,39	52,76	55,11
Shoulder (cm)	8,2	8,5	8,8	9,1	9,4	9,7	10	10,3	10,6	10,9	11,2
Shoulder (yards)	0,09	0,093	0,096	0,1	0,103	0,106	0,109	0,11	0,116	0,12	0,12
Shoulder (inch)	3,23	3,35	3,46	3,58	3,7	3,82	3,94	4,05	4,17	4,29	4,4
Dress length (cm)	88,5	89	89,5	90	90,5	91	91,5	92	92,5	93	93,5
Dress length (yards)	0,97	0,97	0,978	0,98	0,989	0,99	1	1	1,01	1,02	1,02
Dress length (inch)	34,84	35,04	35,24	35,4	35,63	35,87	36,02	36,22	36,42	36,6	36,81
Shirt length (cm)	62	62,5	63	63,5	64	64,5	65	65,5	66	66,5	67
Shirt length (yards)	0,68	0,68	0,68	0,69	0,69	0,7	0,71	0,72	0,72	0,73	0,73
Shirt length (inch)	24,4	24,6	24,8	25	25,2	25,4	25,6	25,8	26	26,2	26,4
Long sleeve (cm)	60	60	60	60	60	60	60	60	60	60	60
Long sleeve (yards)	0,66	0,66	0,66	0,66	0,66	0,66	0,66	0,66	0,66	0,66	0,66
Longsleeve (inch)	23,6	23,6	23,6	23,6	23,6	23,6	23,6	23,6	23,6	23,6	23,6
Short sleeve (cm)	14	14,4	14,8	15,2	15,6	16	16,6	18,8	19,2	19,6	20
Short sleeve (yards)	0,15	0,16	0,16	0,17	0,17	0,18	0,19	0,19	0,2	0,21	0,22
Short sleeve (inch)	5,51	5,67	5,83	5,98	6,14	6,29	6,54	7,4	7,56	7,72	7,87



Now place your sleeves (short or long version) along the cut-outs for the armhole. Use the notches for orientation. Pin the sleeves with the right sides together onto the shoulder seam first.



Then fix them along the armholes with pins or clips.



Topstitch both sleeves with your serger or the zig-zag-stitch of your sewing machine.

