

# Les patronnes

PATTERN  
WITH  
VIDEO  
TUTORIAL!



*Delaunay*

Level 3 : Advanced



Category Women's



Size

From 34 to 46 (EUR)  
(XXS to XL)

## LEVEL 3 - ADVANCED



You will learn to:

- Sew a yoke
- Stitch a lining
- Sew an invisible zip

## YOU'LL NEED:

- Recommended Fabrics: - Wool, cotton canvas, padded fabric, tweed, jacquard, twill, piqué etc.
- Bobbins of assorted thread colours
- Some fusible interfacing (flexible and suitable for your chosen fabric)
- Lining (to match your fabric)
- An invisible zip (22cm)

## MEASUREMENTS

In metres	34	36	38	40	42	44	46
140 width fabric	0.80	0.85	0.85	0.85	0.85	0.85	0.90
110 width fabric	1.25	1.30	1.30	1.35	1.35	1.35	1.40
140 width lining	0.50	0.55	0.55	0.55	0.55	0.55	0.60
110 width lining	0.95	1.00	1.00	1.05	1.05	1.10	1.10

## BODY MEASUREMENTS

FOR A WOMAN MEASURING 1.65M (5'5")

in cm	34	36	38	40	42	44	46
Bust	80	84	88	92	96	100	104
Waist	62	66	70	74	78	82	86
Hips	89	93	97	101	105	109	113



[www.lespatronnes.fr](http://www.lespatronnes.fr)

THE +'S:  
- SEWING ALLOWANCES INCLUDED  
- NON-SUPERIMPOSED PATTERNS  
- VIDEO TUTORIALS TO SEW AT YOUR OWN PACE



# VIDEO TUTORIALS

To help you make your Delaunay skirt, you can follow our video tutorials on our website and YouTube channel

There you'll find not only the complete video on the Delaunay skirt, but also the following videos on:

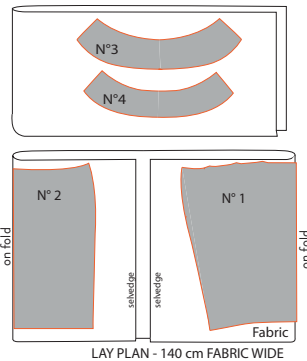
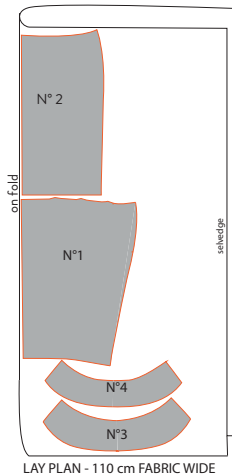
- How to cut and place your fabric
- How to sew an invisible zip

<https://www.lespatronnes.fr/tuto-couture-videos-pas-a-pas/>

## Method

### Step 1: Preparation

#### A THE CUT



- 1 Iron your fabric (which should ideally have been washed beforehand) and fold it in 2 (for the 110cm width fabric) or in 3 (for the 140cm fabric) in the direction of the grain line (parallel to the selvedge).
- 2 Trace and/or cut out your pattern piece to the desired size.
- 3 Place the pattern paper on the fabric, putting the marker "along the fold" edge-to-edge with the fold of the fabric and pin the pattern piece to the fabric (c.f lay plan diagrams).

4 Cut your fabric right up to the edge of the pattern piece.

5 Do the same for the lining and the fusible interfacing.

NB: If your fabric is thick, cut only two yokes - one on the back and one on the front.

6 Transfer the pattern notches and folds on the front and back pieces of the fabric and lining.

to read more, please download the pattern