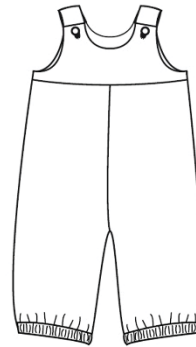


BOBBY ©



Bobby (C): Overall long pants for boys and girls with elastic hemline.

For winter and summer, depending on fabric choice

Suggested fabric: fine corduroy, cotton fabrics, light denim

Before cutting out the garment pieces, add seam and hem allowances to the original contours. Seams 1,5 cm, hems 3cm

Lay out the pattern pieces on a double layer of fabric (right sides facing).

Lining for yoke model A and C: 30 cm

Size	Fabric length	Elastic hemline
6M/9M	75 cm	44 cm
12M/18M	85 cm	46 cm
2Y/3Y	100 cm	48 cm
4Y/5Y	105 cm	50 cm

Important: Before printing the option “fit-to-page” must be disabled!

The printing scale must be 100%. The printed pages must be assembled following the order of the numbers. On the square of 5 x 5 cm you can measure if the printed pages have the right size.



Finish off seams and pin front and back panels together, right sides facing.



Stitch crotch seams and press the seams.





Pin front yoke to front panel and back yoke to back panel, right sides together, and stitch.



Fold seam allowances towards yoke and press. Finish off seams together.

