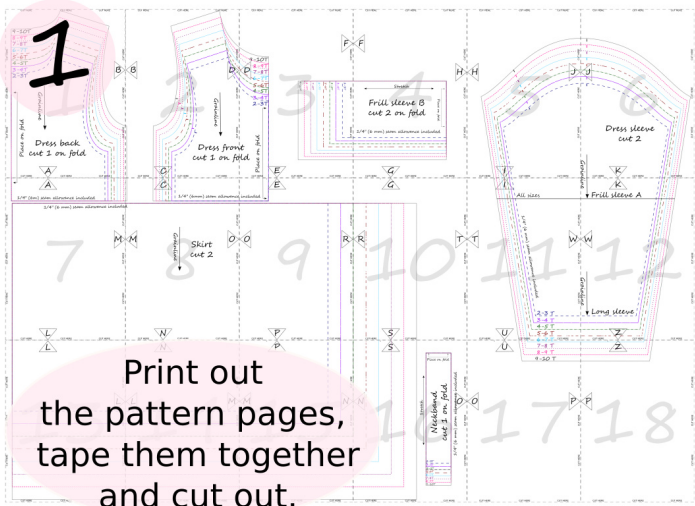




FRILL AND CLASSIC  
SLEEVES DRESS PATTERN  
sizes 2T-10T

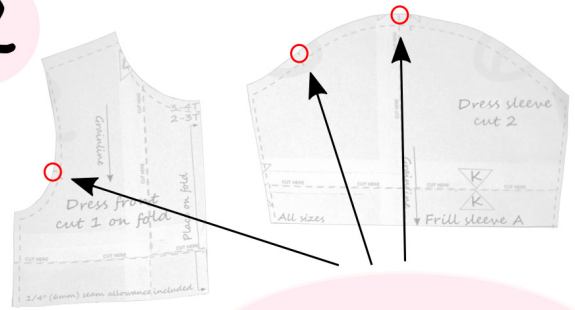
# SEWING INSTRUCTIONS

## Frill sleeves dress



Print out the pattern pages, tape them together and cut out.

2



Cut out your pattern pieces from the fabric. Clip notches - you will need it later.

3



For frill sleeves dress cut:  
1 front, 1 back, 2 sleeves  
piece A, 2 sleeves piece B,  
1 neckband, 2 skirt  
pieces.

4



Put front and back of the dress right sides together, match the shoulders. Stitch the shoulder seams.

5



Fold the neckband in half right sides together and sew.

6



Fold the neckband in half, seam inside.