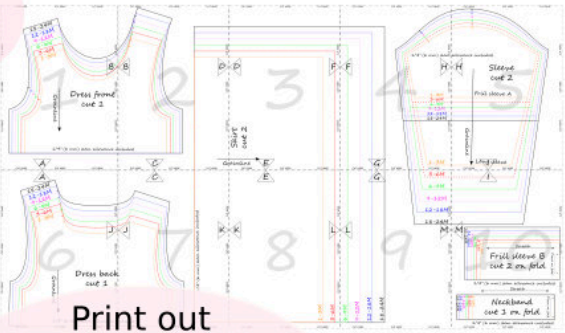




## FRILL AND CLASSIC SLEEVES DRESS PATTERN sizes 1M-24M

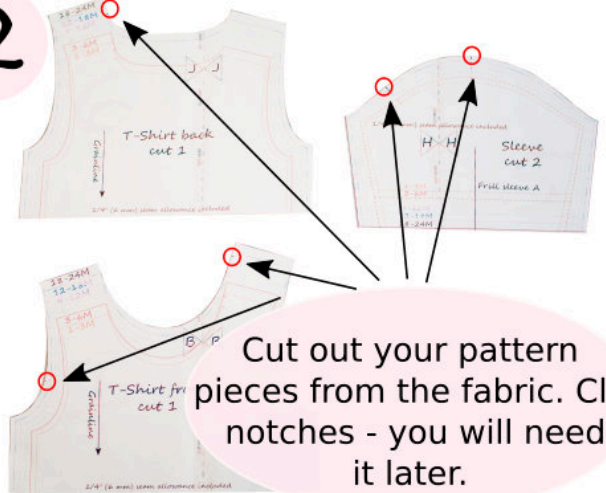
# SEWING INSTRUCTIONS Frill sleeves dress

1



Print out the pattern pages, tape them together and cut out.

2



Cut out your pattern pieces from the fabric. Clip notches - you will need it later.

3



For frill sleeves dress cut:  
1 front, 1 back, 2 sleeves piece A, 2 sleeves piece B, 1 neckband, 2 skirt pieces.

4



Put front and back of the dress right sides together, match the shoulders. Sew at the shorter shoulder.  
Cut two small pieces of fusible interfacing and place them on the other shoulder edges to reinforce areas where snaps will be placed.

5



If You have serger, serge the second shoulder edges for nice finishing.

6



Fold the neckband in half (parallel to the long edges) right sides together. Sew along the short edges.