

Les patronnes

PATTERN
WITH
VIDEO
TUTORIAL!



Niki

Level 2 : Intermediate



Category : Women's



Size

From 34 to 46 (XXS to XL)



LEVEL 2 - INTERMEDIATE

You'll learn to:

- Sew either a Peter Pan or funnel neck collar
- Sew raglan sleeves
- Prerequisites: Straight stitching, and bias binding

THE + :
 - SEWING ALLOWANCES INCLUDED
 - NON-SUPERIMPOSED PATTERNS
 - VIDEO TUTORIALS TO SEW AT YOUR OWN PACE

YOU'LL NEED :

- Recommended sweater fabrics: jersey sweatshirt fleece, thick textured jersey, quilted jersey, woollen fabric, or soft tweed
- Recommended Peter Pan collar fabrics: thin cotton canvas, batiste, Liberty®, poplin
- Bias tape
- Assorted thread bobbins
- A button (or 3 for the funnel neck variation)
- Fusible interfacing (optional)

MEASUREMENTS

In metres	34	36	38	40	42	44	46
110cm fabric	155	155	155	155	155	160	170
140cm fabric	155	155	155	155	155	155	155
Fabric for collar	30	30	30	30	30	30	30
Bias binding	90	90	90	95	95	100	100

BODY MEASUREMENTS

FOR A WOMAN MEASURING 1.65M (5'5")

In cm	34	36	38	40	42	44	46
Bust	80	84	88	92	96	100	104
Waist	62	66	70	74	78	82	86
Hips	89	93	97	101	105	109	113



www.lespatronnes.fr



100% RECYCLABLE
 Made in France

Les Patronnes,

are here to help you start sewing and make up your wardrobe at the same time, without any hassle!

To do this, we're making life easy with :

- The seam allowances already included (to avoid any headaches)
- Pattern pieces which aren't superimposed (for easy reading)
- Video tutorials on our YouTube channel, to accompany you through process of making each piece (so you can sew at your own pace)

And just to make sure you've got everything you need in order to get started, we've even put together a complete 'toolbox,' including technical advice and handy sewing tips, which you can find on our website!

The Niki Sweater,

It's feminine finesse coupled with soft comfort.

Say goodbye to your basic sweater, the Niki's has a pretty neckline with a collar, a teardrop fastening and narrow darts at the waist and wrists.

Comfortable and conceived with care, the Niki sweater goes with all body types!

Its name, as you might well have guessed, comes from the artist Niki de Saint Phalle, a woman who has always asserted her femininity while rejecting the cliché of women as objects.

Don't forget to share your creations on Instagram with the hashtag
#lespatronnesNiki

VIDEO TUTORIALS

To help you make your Niki Sweater, you can follow our video tutorials on our website and YouTube channel

<http://www.lespatronnes.fr/tuto-couture-videos-pas-a-pas/>

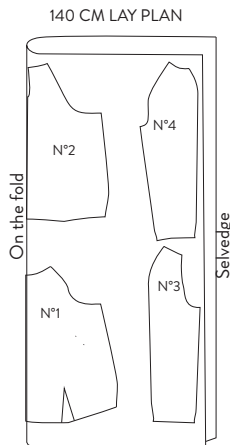
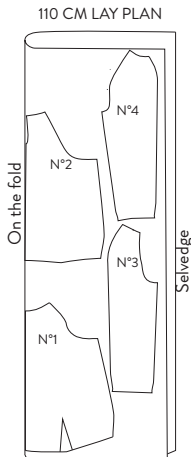
There you'll find not only the complete video on the Niki Sweater but also the following videos on :

- How to cut and place your fabric
- How to make darts
- How to sew invisible bias binding
- How to sew bias binding around curved edges
- How to take up a hem

Method

Step 1: Preparation

A THE CUT



REMEMBER :
A 1CM SEAM
ALLOWANCE
AND A 2.5CM HEM
ALLOWANCE ARE
INCLUDED!

- 1 Iron your fabric (which should ideally have been washed beforehand) and fold it in 2, in the direction of the grain line (parallel to the selvage).
- 2 Trace and/or cut out your pattern piece to the desired size, and choose either the No. 5 collar (Peter Pan collar) or the No.5b collar (funnel neck collar).
- 3 Place the pattern paper on the fabric, putting

the marker "along the fold" edge-to-edge with the fold of the fabric, and pin the pattern piece to the fabric (c.f lay plan diagrams) following the grain line.

- 4 Transfer the pattern to the fabric, marking carefully
-

To read more,
download the Niki
Sweater Pattern !