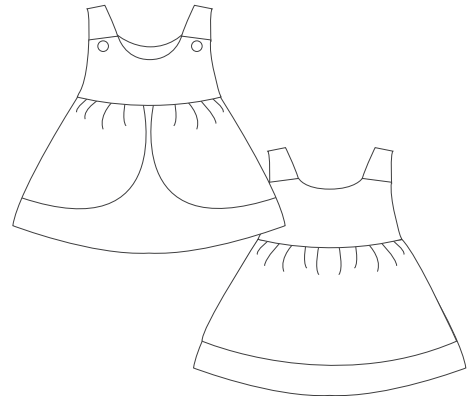


Rosa[©]



★SOOOOOO SWEET ★ Toddler, kids baby girl dress! Very pretty and quite easy sewing pattern girls pinafore dress with lined yoke, ruffled upper skirt section and buttons

★The pattern already includes 1 cm/0²⁵/₆₄in seam allowances! The 3 cm seam allowance of the hem needs to be added.

Fabric recommendation for spring and summer:

Cotton fabric, linen, lightweight denim or muslin.

Fabric recommendation for autumn and winter:

Baby corduroy, flannel, light denim or gabardine

Fuse interfacing for yoke and straps 30 cm/11¹³/₁₆in

2 covered buttons 1,5 cm/0¹⁹/₃₂in

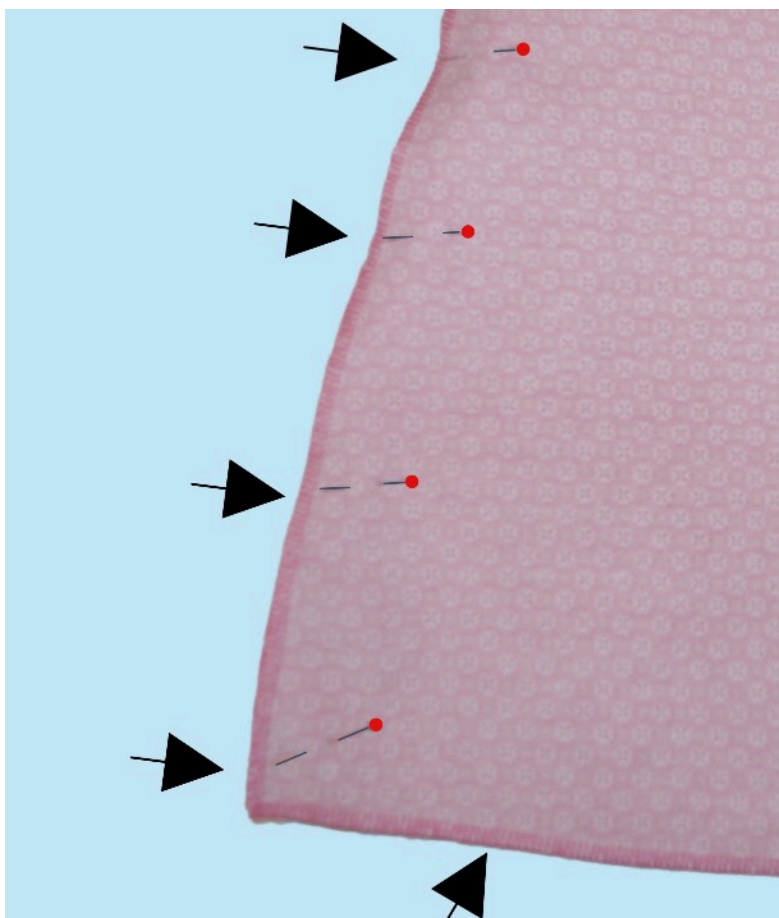
Cut when double layer of fabric, right side inside.

Fabric consumption with a fabric width of 1.40 meters/ 40¹⁵/₁₆ in.

Size	Fabric 1 length	Fabric 2 length
3M/6M	55 cm/21 ²¹ / ₃₂ in	50 cm/19 ¹¹ / ₁₆ in
9M/1Y	60 cm/23 ⁵ / ₈ in	55 cm/21 ²¹ / ₃₂ in
18M/2Y	65 cm/25 ¹⁹ / ₃₂ in	60 cm/23 ⁵ / ₈ in
3Y/4Y	70 cm/27 ⁹ / ₁₆ in	65 cm/25 ¹⁹ / ₃₂ in

Important for e-book:

"Page, Sizing and Handling" should be set to "Actual size". No scaling is required while printing. Printing orientation should be set to "Auto Portrait/ Landscape". Please check if the measure square 5 cm to 5 cm/ 1²⁵/₃₂ in. to 1²⁵/₃₂ in. matches with your printing.



Finish off side seams and hems of lower skirt back and front panels.

Pin right sides together and stitch the side seams.

Press the seams.





Finish off side seams and upper seams of upper skirt back and front panels.

Sew 2 gathering stitches along top edges by decreasing the upper thread tension and increasing the stitch length.)

Leave long thread ends (approx. 10cm).



Mark the center front on the lower skirt front panel.

Gather each upper skirt panel to fit half of lower garment section.

