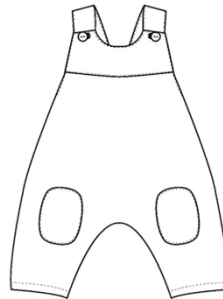


ARTURO[©]



Modell A: Phil

Summer overall with shoulder straps and elastic in center back, without center seam. Without photo instructions.

Model B: Arturo

Overall with shoulder straps, knee patches, and elastic in centre back, without centre seam.

Detailed photo instructions.

Important for e-book:

“Page, Sizing and Handling” should be set to “Actual size”. No scaling is required while printing. Printing orientation should be set to “Auto portrait/ Landscape”.

Please check the measure square 5 cm to 5 cm (1.97 in. to 1.97 in.) matches your printing

Before cutting out the garment pieces, add seam and hem allowances to the original contours

Seam 1,5 cm/0.59in. and hem 3 cm/1.18in.

Lay out the pattern pieces on a double layer of fabric right sides facing

Fabric requirements:

1,40m width/ 55.12 in. width

Model A "Phil"**Cm**

Size (Body height)	Fabric length	Lining length
56 cm/62 cm (1M/3M)	50 cm	30 cm
68 cm/74 cm (6M/9M)	55 cm	30 cm
80 cm/86 cm (12M/18M)	65 cm	30 cm
92 cm/98 cm (2Y/3Y)	70 cm	30 cm

elastic**Hem elastic****Back elastic**

Size 56/62	21,5 cm	17 cm
Size 68/74	22 cm	17,5 cm
Size 80/86	22,6 cm	18 cm
Size 92/98	23,2 cm	18,5 cm

Model B Arturo:**Cm**

Size (Body height)	Fabric length	Back elastic
56 cm/62 cm (1M/3M)	60 cm	17 cm
68 cm/74 cm (6M/9M)	70 cm	17,5cm
80 cm/86 cm (12M/18M)	80 cm	18 cm
92 cm/98 cm (2Y/3Y)	90 cm	18,5cm

Inches

Size (Body height)	Fabric length	Back elastic
1M/3M	23.62 in.	6.68 in.
6M/9M	27.56 in.	6.89 in.
12M/18M	31.5 in.	7.09 n.
2Y/3Y	35.43 in.	7.28 in.



Knee patches:

Trace motif from pattern sheet on double-sided fusible web and fuse web to wrong side of velour patch. Cut patch along its outlines, remove paper backing and fuse patch to right side of front panel.



Pin tear-away backing to wrong side of front panel under appliqué patch. Appliqué patch with reinforced straight stitch. Remove tear away backing.

