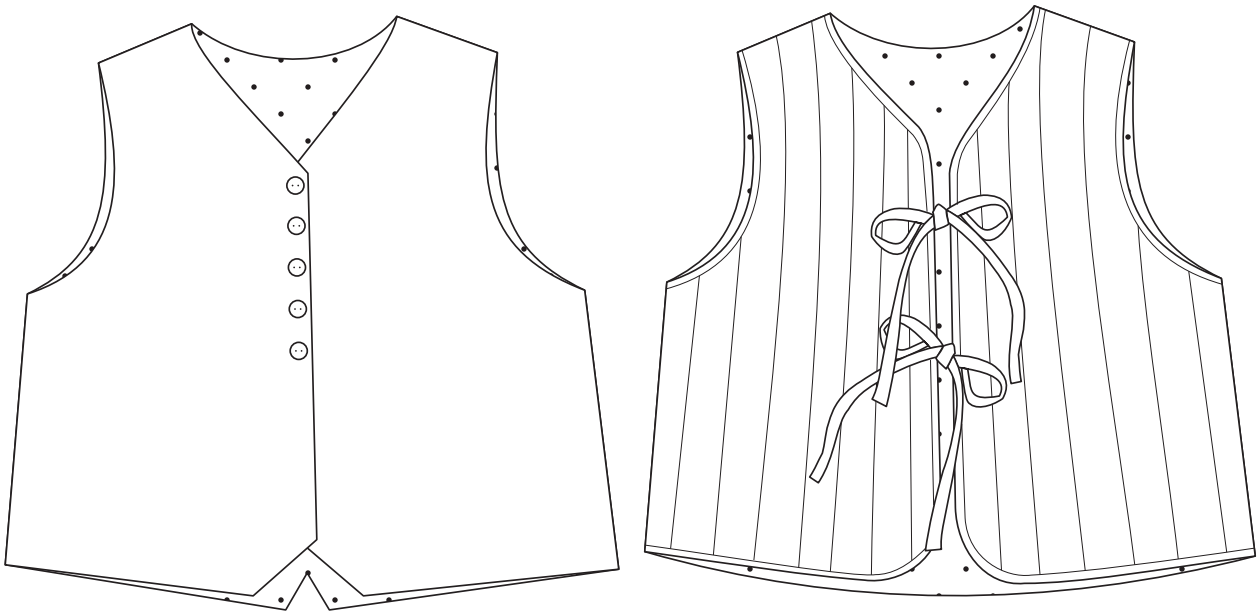


# ATELIER MIMITO

SEWING PATTERNS



## JAPI

REVERSIBLE UNISEX VEST  
SIZE 18 MONTHS TO 12 YEARS

LEVEL: BEGINNER

@ateliermimito #japimimito

© ATELIER MIMITO 2021  
This pattern is for personal use only.  
It is not to be used for commercial purposes.

The JAPI vest along with all ATELIER MIMITO patterns, were designed for your child to grow into so you don't have to change their wardrobe every few months, however I do offer multiple sizes as every child is different.

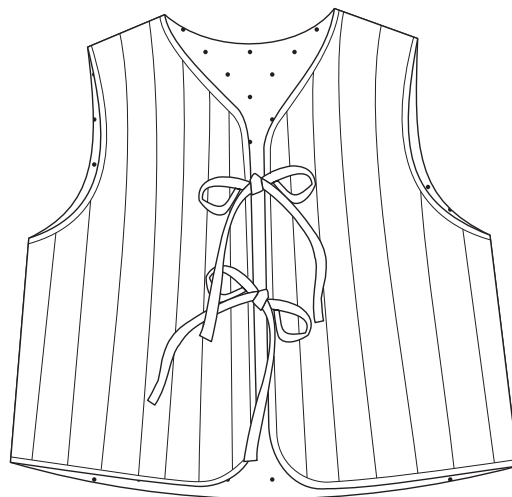
This pattern and tutorial allow you to create a fully lined unisex vest for a seamless finish in two different views.

VIEW A is a traditional vest that is entirely seamless with button closure.

VIEW B is a quilted vest with rounded corners finished with a bias binding and strap closure.



VIEW A



VIEW B

## RECOMMENDED FABRICS

From lightweight to heavy-weight linen, cotton twill or denim for the outer fabric. Soft cotton shirting, cotton cheesecloth, cotton voile, flannelette, any soft, natural woven fabrics with a good drape for the lining. You might want to add batting between layers for a quilted look (view B) or interfacing for a stiffer look (view A).

If you are not sure which fabric to use, look up the hashtag [#japimimito](https://www.instagram.com/japimimito) on Instagram for inspiration.

## FABRIC USAGE

The JAPI vest is fully lined so you will need two fabrics for this project along with the batting or interfacing.

Size	18 to 24M	24 to 36M	4 to 5Y	6 to 7Y	8 to 9Y	10 to 12Y
110cm wide	40cm	50cm	50cm	60cm	60cm	60cm

**Please note:** Make sure your fabric is washed before cutting.

## NOTIONS

- Fabrics
- Batting (view B), interfacing (view A)
- Matching threads
- Five buttons (option A)
- 2m bias binding (you can make your own)

## BODY MEASUREMENTS

Please follow the chart below to see where your child would be the most comfortable in and don't hesitate to choose a size up so your little one has room to grow. Choose a size according their bust measurement and not their age.

<b>Size</b>	<b>18 to 24M</b>	<b>24 to 36M</b>	<b>4 to 5Y</b>	<b>6 to 7Y</b>	<b>8 to 9Y</b>	<b>10 to 12Y</b>
<b>Height</b>	85 - 95cm	95 - 105cm	105 - 115cm	115 - 125cm	125 - 135cm	135 - 147cm
	33.5 - 37in	37 - 41.5in	41.5 - 45.5in	45.5 - 49in	49 - 53in	53 - 58in
<b>Bust</b>	50cm	54cm	58cm	62cm	66cm	70cm
	19.5in	21in	23in	24.5in	26in	27.5in
<b>Waist</b>	47cm	49cm	51cm	53cm	55cm	57cm
	18.5in	19.5in	20in	21in	21.5in	22.5in
<b>Hips</b>	53cm	57cm	61cm	64cm	68cm	72cm
	21in	23in	24in	25in	26.5in	28.5in

## PDF SEWING PATTERN

**Please note:** This pattern contains two files. A Print At Home file and a Copy Shop file. If using Adobe Acrobat, you can choose to print only the size you need by selecting the corresponding layer.

The Copy Shop file can be printed at any printing store onto a large piece of paper. It needs to be printed true to size at scale 100%. This specific file fit onto an A1 paper or US equivalent. Remember to measure the check square at the store before you go home to make sure your pattern has been printed correctly. The Copy Shop file is also suited for projector.

The Print At Home file can be printed at home with any standard printer at scale 100%. It contains 20 pages that you need to assemble by cutting the margins and taping the pages together following the numbers indicated on each page. This file suits both A4 and US Letter printers.

Remember to measure the test square to ensure your pattern has been printed at the correct scale.

## VIDEO TUTORIAL

[You will find a step by step video tutorial on my YouTube channel Atelier MIMITO.](#)

You will find a breakdown of the construction steps in the video description. The time for each step is indicated on this tutorial as you go along. This way you can sew as you watch and pause when needed.

Remember to subscribe to my channel to find out of any updates or new tutorials.

## GLOSSARY

- Right and wrong side of the fabric: The right side is the side that shows on the outside of the garment and the wrong side will be on the inside. The following tutorial shows the wrong side of fabric in grey and the right side of fabric in white.

- Seam allowance: The distance between the line of stitching and the raw edge.