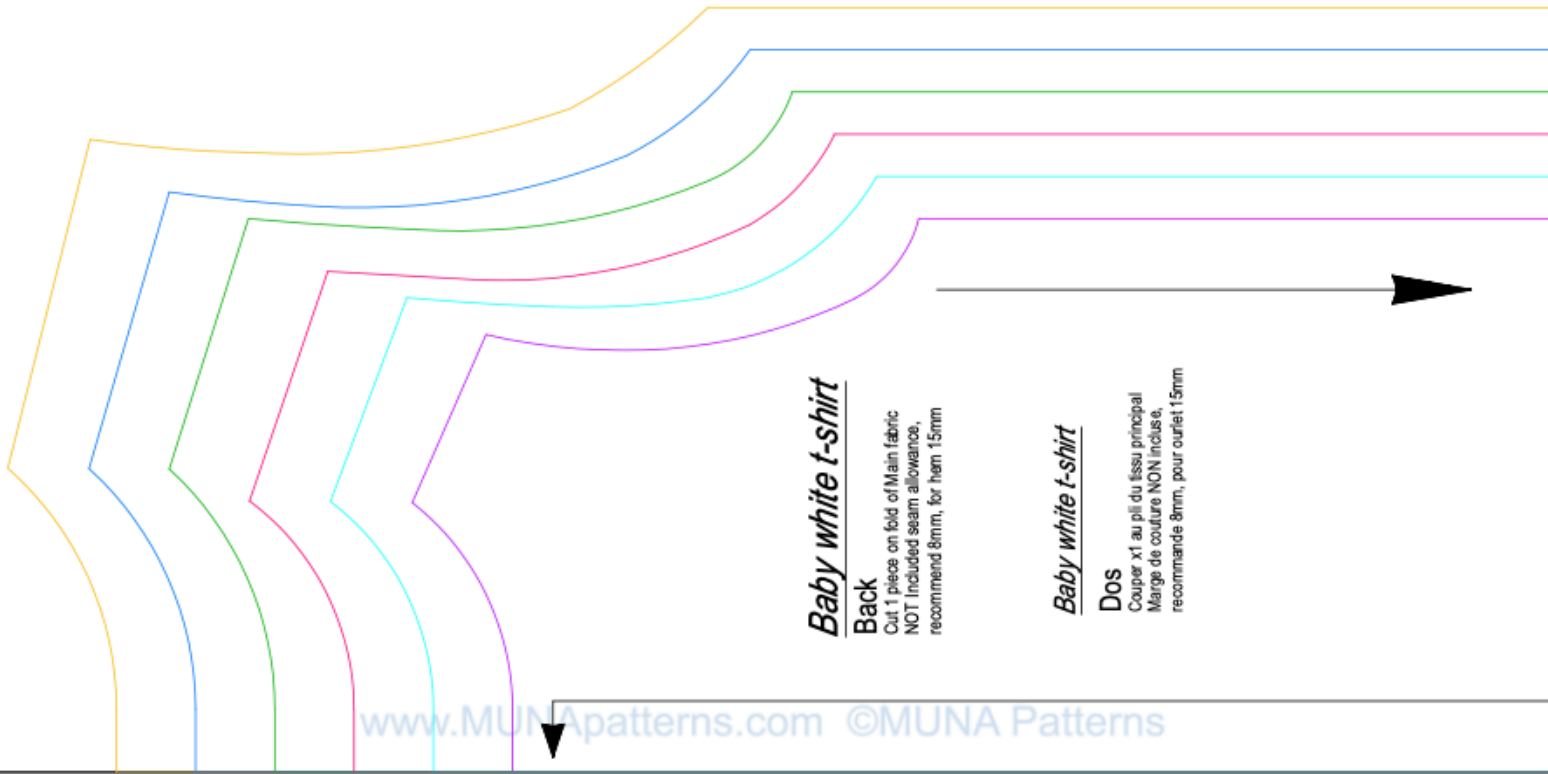


# 1



### *Baby white t-shirt*

#### **Back**

Cut 1 piece on fold of Main fabric  
NOT included seam allowance,  
recommande 8mm, for hem 15mm

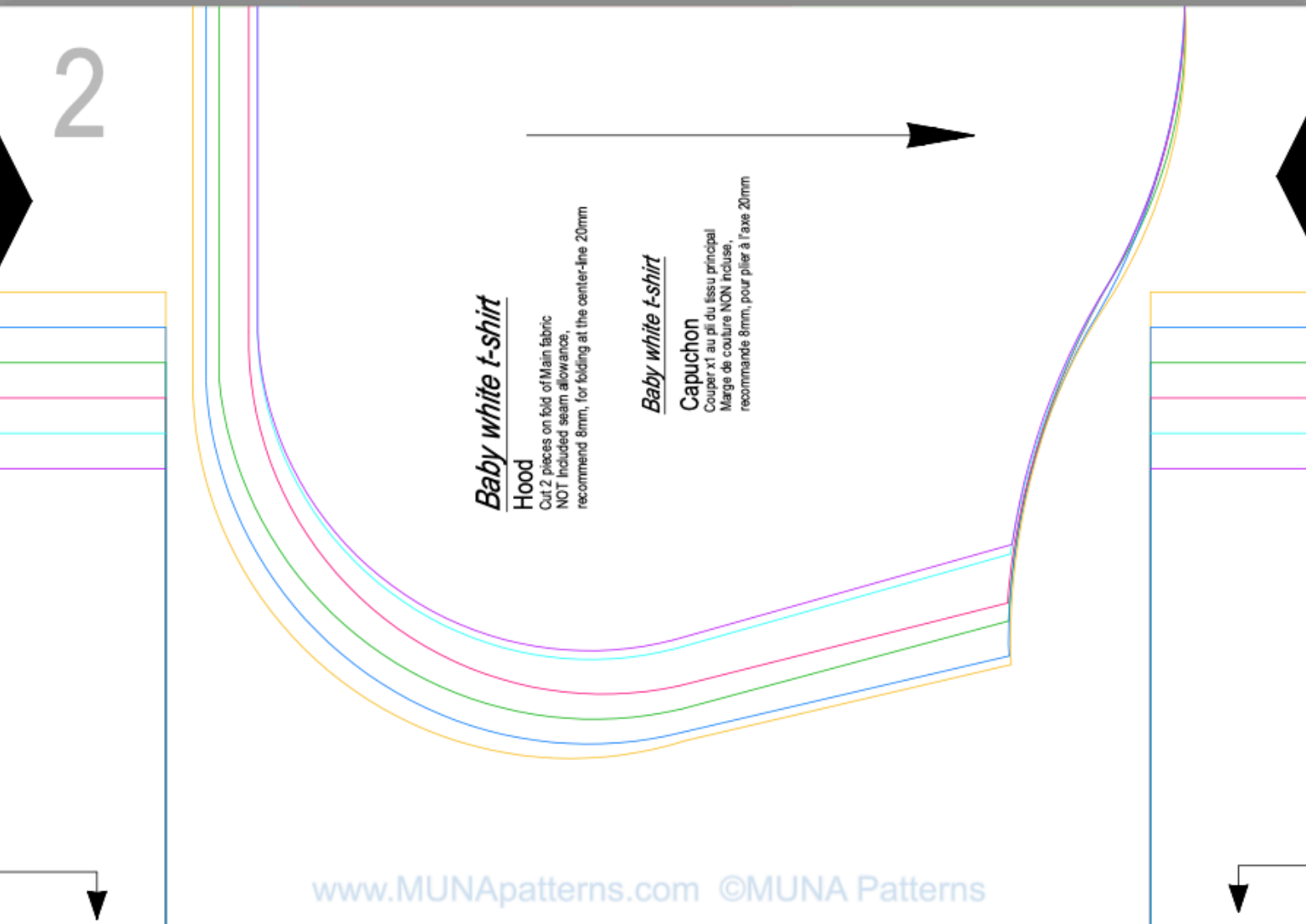
### *Baby white t-shirt*

#### **Dos**

Couper x1 au pli du tissu principal  
Marge de couture NON incluse,  
recommande 8mm, pour ourlet 15mm

www.MUNApatterns.com ©MUNA Patterns

# 2



### *Baby white t-shirt*

#### **Hood**

Cut 2 pieces on fold of Main fabric  
NOT included seam allowance,  
recommande 8mm, for folding at the center-line 20mm

### *Baby white t-shirt*

#### **Capuchon**

Couper x1 au pli du tissu principal  
Marge de couture NON incluse,  
recommande 8mm, pour plier à l'axe 20mm

www.MUNApatterns.com ©MUNA Patterns