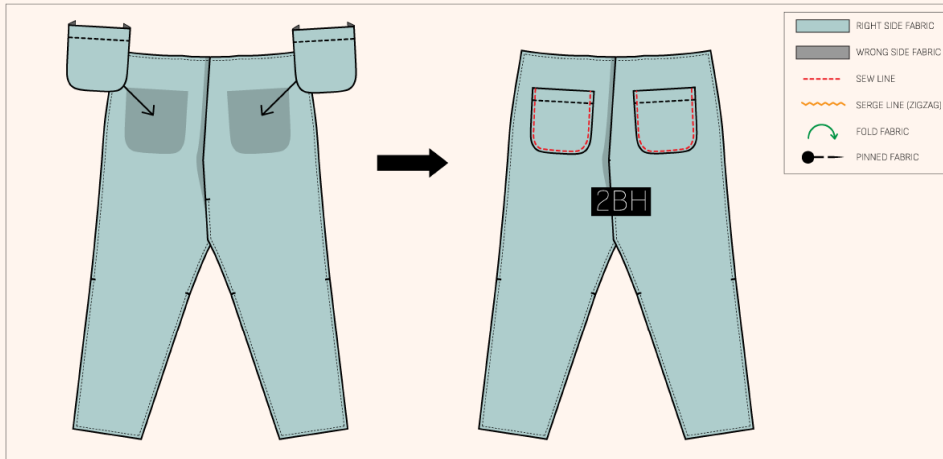
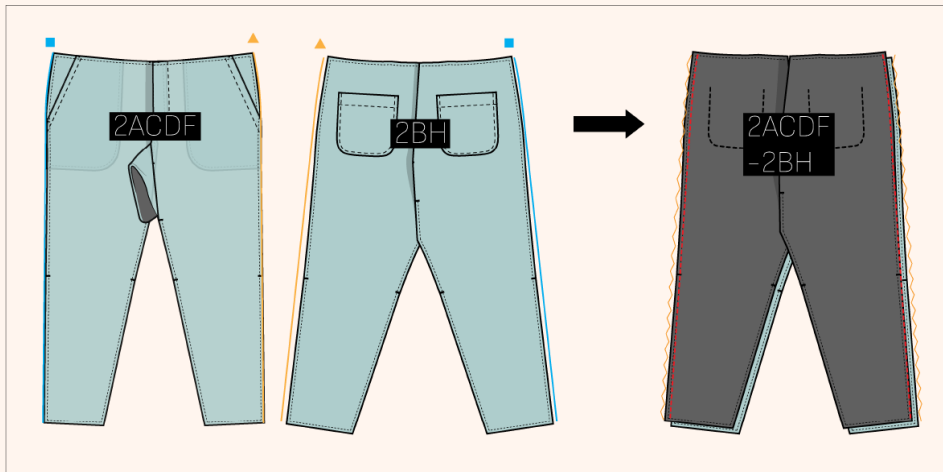


6 SEWING BACK PANEL AND TWO BACK POCKETS.
2B AND H

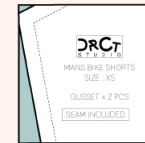


7 SEWING OUT SEAM, FRONT AND BACK PANEL.
2ACDF AND 2BH ▲▲▲▲

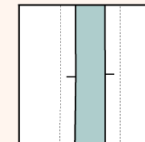


PATTERN GLOSSARY

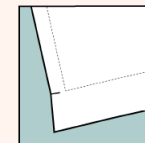
HOW TO READ PATTERN?



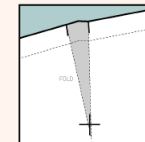
<SEAM ALLOWANCE>
ALL OF PATTERN HAS SEAM ALLOWANCE.
IF DON'T WANT SEAM ALLOWANCE, CUT DOTTED LINE.



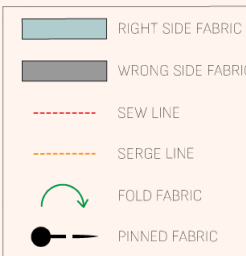
<NOTCH - JOIN PIECES>
NOTCH MARK COMES OUT MIDDLE OF LINE, MEANS MATCH THAT POINT WHEN SEWING JOIN PIECES.
WHEN PLACE A PATTERN ON THE FABRIC AND CUT, CUT LITTLE MARK ON FABRIC.



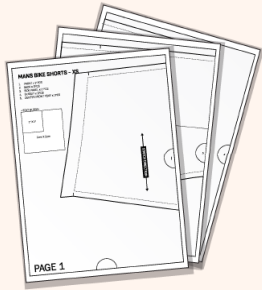
<NOTCH - HEM>
NOTCH MARK COMES OUT HEM AREA, MEANS SEAM ALLOWANCE SPECIFICALLY FOR HEM.
WHEN PLACE A PATTERN ON THE FABRIC AND CUT, CUT LITTLE MARK ON FABRIC.



<DART>
DART WILL BE FOLD AND SEWING ON FABRIC.
MAKE A DRILL HOLE AND CUT NOTCH, AND SEWING ALONG THE FOLD LINE.

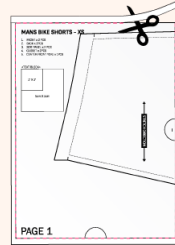


PAPER ASSEMBLY GUIDE



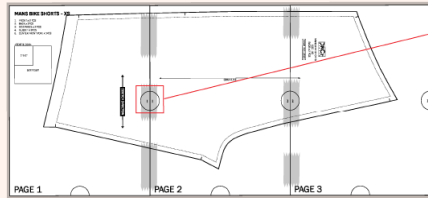
1

DRCT Studio offer A4/us letter size option.
This PDF is a tiled version that you can print out
on your desktop printer and all the separate pages
together.



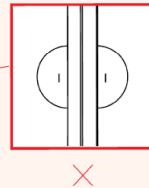
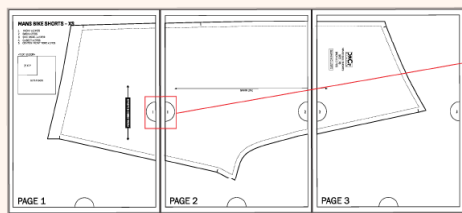
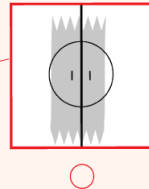
2

need to trim each sheet by cutting off the
top and the left margin.



3

Stick them together row by row and then connect the rows.
Assemble pattern pieces by matching circles with the same number in
them!

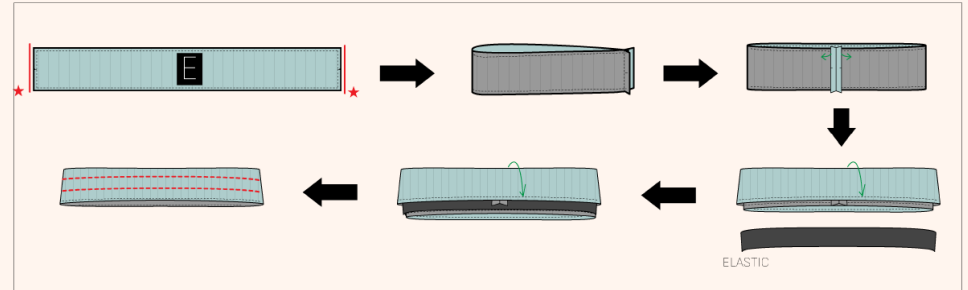


DO NOT join the sheets along the edges.

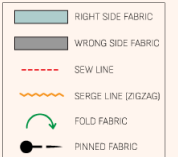
SEWING WAISTBAND. **E**

10

PUT ELASTIC BAND BETWEEN THE WAISTBAND THEN TWO LINE TOP STITCH.
(FINISH SIZE : XS= 30, S=32", M=34", L=36", XL=38")
(CUT SIZE : XS= 31", S=33", M=35", L=37", XL=39")



ELASTIC



11

SEWING WAITSTBAND AND BODY. ●●●

**2ACDF
-2BH** AND **E**

