

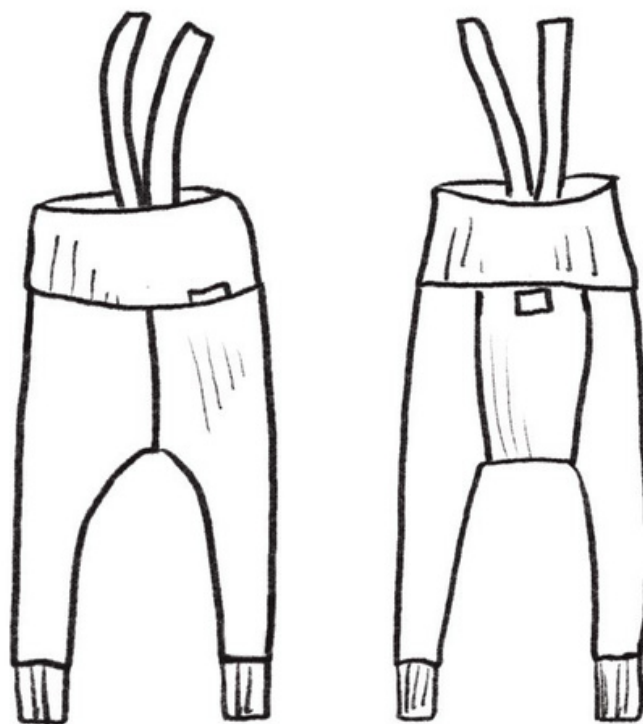


## LEGGINGS WITH SUSPENDERS - HIGH WAIST

---

SEWING PATTERN A4

SIZE: 56 - 92



## SIZE

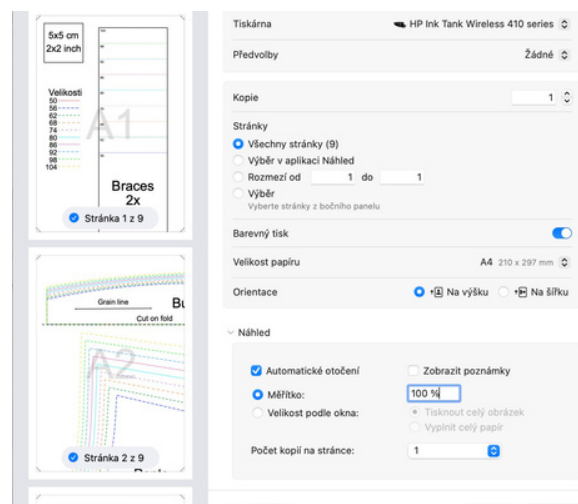
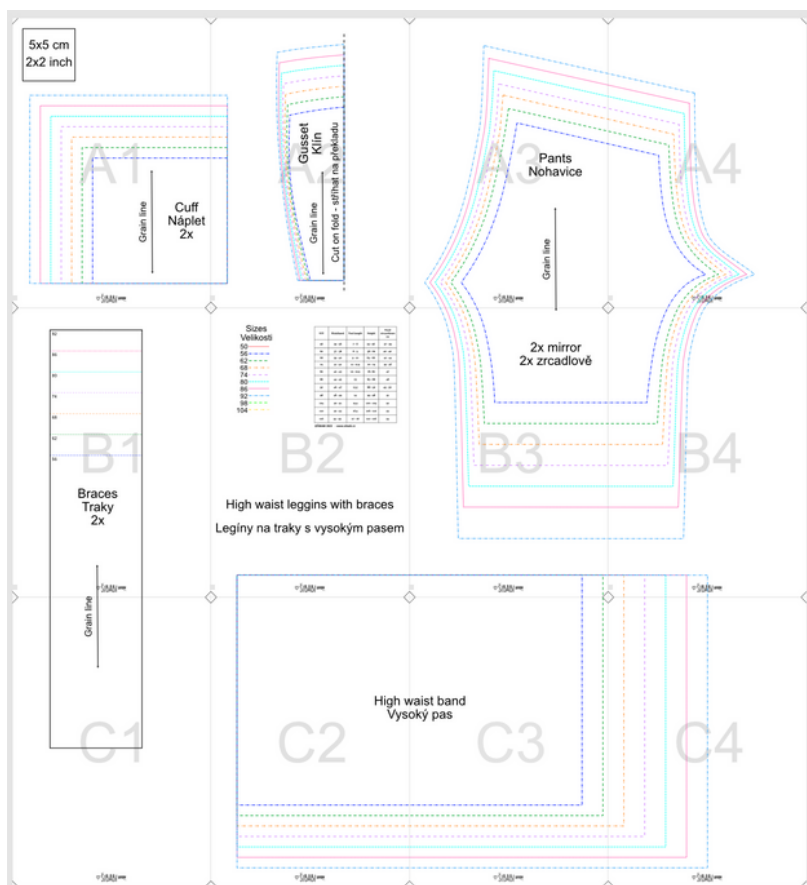
What is the best way to work with the table? Measure your child, for example, height, and find the appropriate size according to height in the appropriate table. If you are sewing a T-shirt, measure the shoulders, if a hat, you need to measure the circumference of the head just above the ears.

Measurement chart: Units in Inches and ( cm ) :::

Size	Waist	Chest	Total height	Inseam - without diaper	Head
Preemie (44)	14" (35.5cm)	13.75 (35)	17.5 (44)	5 (13)	13.75 (35)
Newborn (52)	16 (40.75)	15.5 (39.25)	20.5 (52)	6.75 (17)	15 (38)
0-3 (62)	17.5 (44.5)	17 (43.25)	24 (62)	8.5 (21.5)	16.5 (42.25)
3-6 (68)	18.5 (47)	18 (45.75)	27 (68)	10 (25.75)	17.5 (44.75)
6-9 (74)	19 (48.25)	18.5 (47)	29 (74)	11.25 (28.5)	18 (46)
9-12 (78)	19.5 (49.5)	19 (48.25)	30.5 (78)	12 (30.5)	18.5 (47.25)
12-18 (84)	20.25 (51.5)	19.75 (50.25)	33 (84)	13.5 (34)	19 (48.5)
18-24 (90)	21 (53.25)	20.5 (52)	35 (90)	14 (35.5)	20 (50.75)
2-3 (96)	21.5 (54.75)	21 (53.25)	38 (96)	15.5 (39.75)	20.25 (51.5)
3-4 (104)	22 (56)	22 (56)	41 (104)	17 (43.5)	20.5 (52)
4-5 (110)	22.5 (57.25)	23 (58.5)	44 (110)	18.75 (47.5)	20.75 (52.75)
5-6 (118)	23 (58.5)	24 (61)	46.5 (118)	20.25 (51.5)	21 (53.25)

## HOW TO WORK WITH PATTERN

1. First, find the pattern you want to work with and print it on your computer. The image below is common to all patterns so don't be afraid to preview. This is an illustration only.
2. Open the file in the program you use to read PDF, doc files - preferably Adobe Acrobat Reader.
3. Click on the "print" or "print" icon. A print dialog box will open.
4. To print the cut at the current scale and at the correct size, set the "Current Size" option in the dialog box, see Figure 4.
5. Print your cut on A4. The pattern will be printed in order. Before you rush to glue the pattern together, take a ruler and check the size square is the correct size and your print preferences were correct. Figure 5.
6. If all is in order, you can start to assemble the pattern by cutting the diamonds on the corners of the pages according to the plan to each other, I recommend that you then pull the actual size onto baking paper which can then be redrawn onto stronger and more durable materials, Read more on Shibabi's blog.



## EXPLANATIONS OF TERMS

If you are a beginner seamstress, some of the terms may surprise you. Let's take a look at them and explain how to work with them in relation to cutting and then assembling the finished piece.

### **CUT ON FOLD**

This concept tells you that the printed part is only half of the whole part, and the other half is mirrored. You place the piece on the folded edge of the fabric and cut that way.



## CUT ON MIRROR

This concept tells you that you are cutting two identical pieces of parts so that one piece is mirrored to the other. Look at the picture. You'll get a better idea. With this kind of positioning, you need to keep an eye on the warp of the fabric and also the reverse and face of the fabric.



## GRAINLINE

Grainline of the fabric is important for the correct positioning of the cut on the fabric. How to lay the pattern on the fabric is determined by the arrow, which always goes horizontally with the warp. See picture. By positioning the fabric correctly, you will achieve the correct elasticity in the final piece.



## MATERIAL

1. Flexible ribbed fabric with a minimum of 5% elastane. Elastane is important for body-hugging cuts. They are easy to put on and do not stretch. If you sew in a material other than ribbed knit, it is a good idea to adjust the cut by approx. 1-2 cm in width so that it fits well on other materials.