

## OVERVIEW

### BODY DIMENSIONS

PAGE 3

### FINISHED DIMENSIONS

PAGE 4

### MATERIAL

PAGE 4

### STEP 1: PRINTING

PAGE 5

### STEP 2: CUTTING

PAGE 6

### STEP 3: SEWING

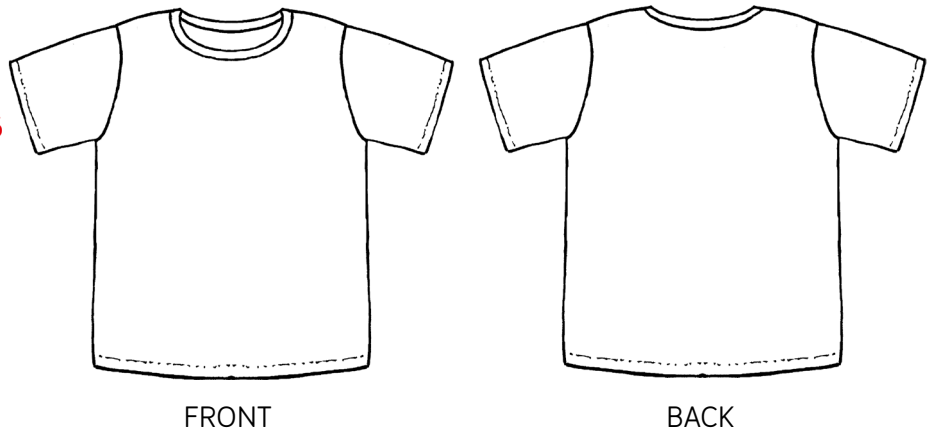
PAGE 7-10

### WEB-TIPP

PAGE 11

### PATTERN SHEETS

PAGE 12-23



## WE ARE STUDIO SCHNITTREIF

Modern and straightforward, that is STUDIO SCHNITTREIF! Since 2012, we have been developing well thought-out patterns and easy-to-follow picture instructions for both beginner sewers and long-term enthusiasts.

STUDIO SCHNITTREIF stands for understated, Scandinavian-inspired fashion without all the frills. Contemporary, minimalist designs with exquisite details.

Have fun discovering our patterns!



Brid and Ayia

## MISS AMY - TAKE IT EASY



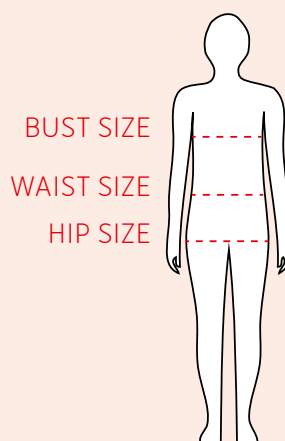
MISS AMY fits when it can be uncomplicated and casual. A classic, short-sleeved T-shirt in the American style. It has a straight and generous cut, the round neckline is finished with a cuff. MISS AMY is casual and sporty at the same time and can be combined with (almost) everything.

### SIZES - BODY DIMENSIONS

#### BUST SIZE:

XS	74 CM	29,13"
S	82 CM	32,28"
M	90 CM	35,43"
L	98 CM	38,58"
XL	107 CM	42,12"
XXL	119 CM	46,85"

THE MEASUREMENTS ARE TAKEN  
HORIZONTALLY AROUND THE BODY  
AT THE POINTS INDICATED.



A crucial aspect of this model is the bust. The values in the table above are the body measurements used as a basis for calculating sizes, based on a height of 164-172 cm [64,5"-67,8"] for sizes S-XXL.

## SIZES - FINISHED DIMENSIONS

MEASUREMENTS IN CM	XS 146/152	S 34/36	M 38/40	L 42/44	XL 46/48	XXL 50/52
BUST SIZE	92	100	108	116	126	136
SHOULDER WIDTH	9	9,5	10	10,5	11,2	11,9
SLEEVE LENGTH	20,9	24	24,5	25	25,5	26
FRONT LENGT	59,5	62,5	63,5	64,5	65	65,5
MEASUREMENTS IN INCHES	XS 146/152	S 34/36	M 38/40	L 42/44	XL 46/48	XXL 50/52
BUST SIZE	36,22"	39,37"	42,52"	45,67"	48,81"	52,76"
SHOULDER WIDTH	3,54"	3,74"	3,94"	1,70"	4,6"	4,88"
SLEEVE LENGTH	8,23"	9,45"	9,65"	9,54"	24,49"	24,68"
FRONT LENGTH	23,43"	24,6"	25"	25,59"	25,98"	26,18"

The measurement chart contains the measurements of the finished item of clothing. This makes it easy to check how wide or how long the model is. The length and sleeve length can also be adjusted as desired.



## MATERIAL

Elastic materials are suitable, such as viscose, cotton and stretch jersey, light knitwear or similar. Since some materials shrink when washed, we recommend only working on pre-washed materials!

MEASUREMENTS IN CM	XS 146/152	S 34/36	M 38/40	L 42/44	XL 46/48	XXL 50/52
FABRIC WIDTH 140	90	100	100	100	100	140
FABRIC WIDTH 160	70	70	100	100	100	100
MEASUREMENTS IN INCHES	XS 146/152	S 34/36	M 38/40	L 42/44	XL 46/48	XXL 50/52
FABRIC WIDTH 55"	40"	40'	40"	40"	40"	60"
FABRIC WIDTH 63"	30"	30"	40"	40"	40"	40"

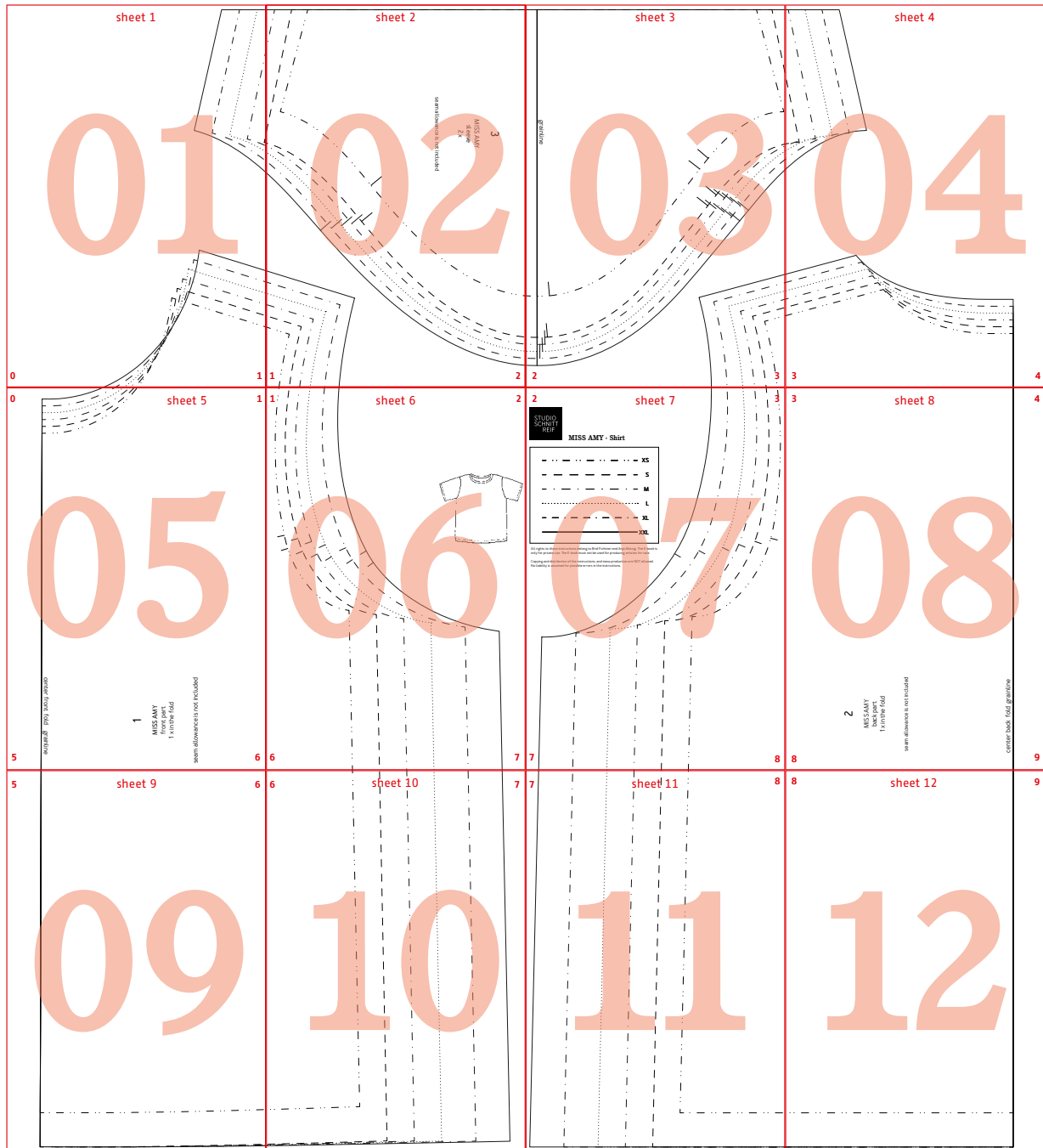
For fabrics with little stretch, we recommend sewing the neckline from cuffed fabric.

## STEP 1: PRINTING

We offer our ebooks in European Din A4 format or US Letter format. Before printing, please make sure that you have downloaded the correct version and that the printer is set accordingly.

To ensure the pattern parts print in the original size, please deactivate automatic page sizing in the print options before printing! To check print size: The test square on sheet 1 should be 5 cm x 5 cm (2" x 2").

The following sketch gives an overview of the positioning of the individual sheets:



The pattern is divided over 12 individual sheets. The sheets must FIRST be cut out along the red lines and then stuck together. The red numbers in the side corners indicate the corners that go together. Then the desired size should be traced, cut out or copied.

We recommend reading through the entire instructions manual before cutting!



## Want to see more?

Have you acquired a taste for sewing and want to get to know all of our cutting patterns and instructions? Are you looking for inspiration or want to know what other people are making from our cutting patterns? Do you want to stay informed and not miss any news? Then visit our website:

WEBSITE: [WWW.STUDIOSCHNITTREIF.DE](http://WWW.STUDIOSCHNITTREIF.DE)

ONLINE-SHOP: [WWW.STUDIOSCHNITTREIF.SHOP](http://WWW.STUDIOSCHNITTREIF.SHOP)

PINTEREST: [WWW.PINTEREST.DE/STUDIOSCHNITTREIF/](http://WWW.PINTEREST.DE/STUDIOSCHNITTREIF/)

INSTAGRAM: [WWW.INSTAGRAM.COM/STUDIOSCHNITTREIF/](http://WWW.INSTAGRAM.COM/STUDIOSCHNITTREIF/)

FACEBOOK: [WWW.FACEBOOK.COM/STUDIOSCHNITTREIF/](http://WWW.FACEBOOK.COM/STUDIOSCHNITTREIF/)

All rights to these instructions belong to Brid Fichtner and Anja Müssig. The e-book may only be used for private use. It may not be used in the production of items for subsequent sale. Copying and circulation of these instructions, and mass production, is NOT permitted..