

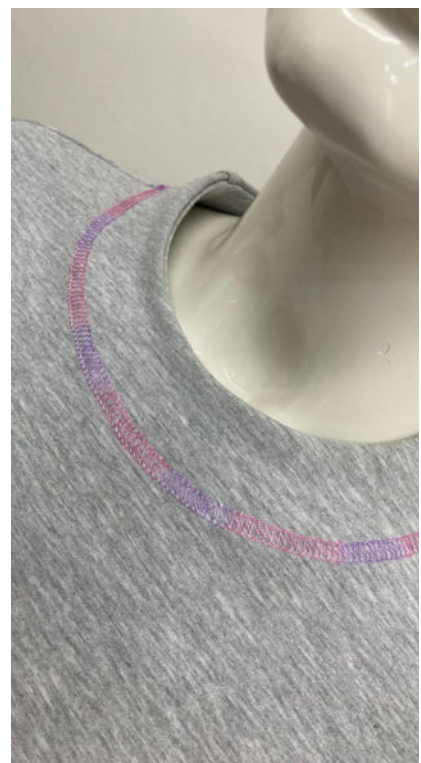
# Evelina

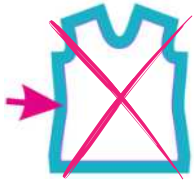


The Evelina sweatshirt is a slightly oversize design. It has drop shoulders and a grown on, stand-up collar that is lined using facing.

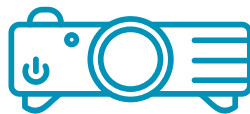
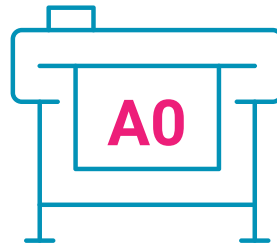
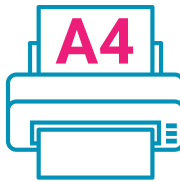
It features slight bell sleeves. It has a casing with a string at the waist. It has a bottom edge facing cut as one piece with the bodice front and back.

The pattern is designed for knits only.





- File A4 25 pages
- File A0+(845x1650)
- Projector



misses measurments - Height 170cm/5.6/66.9"												
sizes	EU	UK	EU	UK	EU	UK	EU	UK	EU	UK	EU	UK
	32(cm)	6(inch)	34(cm)	8(inch)	36(cm)	10(inch)	38(cm)	12(inch)	40(cm)	14(inch)	42(cm)	16(inch)
bust	76	30	80	31 1/2	84	33	88	34 3/4	92	36 1/4	96	37 3/4
waist	56	22	60	23 1/2	64	25 1/4	68	26 3/4	72	28 1/4	76	30
hips	82	32	86	34	90	35 1/2	94	37	98	38 1/2	102	40 1/4

sizes	EU	UK	EU	UK	EU	UK	EU	UK	EU	UK	EU	UK
	44(cm)	18(inch)	46(cm)	20(inch)	48(cm)	22(inch)	50(cm)	24(inch)	52(cm)	28(inch)	54(cm)	30(inch)
bust	100	39 1/4	104	41	110	43 1/4	116	45 3/4	122	48	128	50 1/2
waist	80	31 1/2	84	33	90	35 1/2	96	37 3/4	102	40 1/4	108	42 1/2
hips	106	41 3/4	110	43 1/4	116	45 3/4	122	48	128	50 1/2	134	52 3/4

# File A4 - 25pages



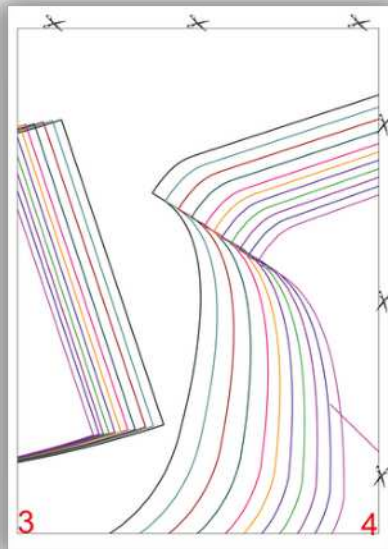
**Sweatshirt Evelina**  
34 36 38 40 42 44 46 48 50 52 54

**Playful Stitches**

20 mm  
20 mm

- Back on fold to
- Front on fold to
- Sleeve 2x
- Cuff 2x
- Back Facing 1x on fold
- Front Facing 1x on fold

1



4

Cuff 2x

1 2

**Important**

Pattern does not include seam allowances

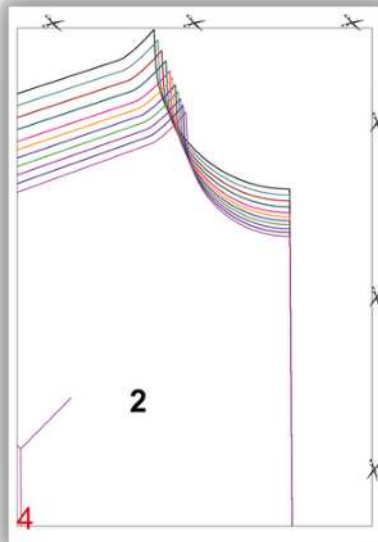
Please add seam allowances depending on whether you are using a regular sewing machine or an overlocker. Suitable fabrics are viscose, polyester or cotton blends or jersey. Copy out your full set of the pattern based on the enclosed measurement chart. I suggest that you check the pattern measurements and make any adjustments necessary before cutting the fabric. Before the first sewing you can trace and try your garment on. You can find detailed sewing step-by-step photo instructions on our website [www.playfulstitches.com](http://www.playfulstitches.com)

Fabric requirement for all sizes is 180 cm

Size	34	36	38	40	42	44	46	48	50	52	54
Back	100	100	100	100	100	100	100	100	100	100	100
Front	100	100	100	100	100	100	100	100	100	100	100
Sleeve	100	100	100	100	100	100	100	100	100	100	100
Cuff	100	100	100	100	100	100	100	100	100	100	100
Back Facing	100	100	100	100	100	100	100	100	100	100	100
Front Facing	100	100	100	100	100	100	100	100	100	100	100

**Notes:**  
This pattern is protected by copyright laws. The content is intended only for your personal use and is not to be used for commercial purposes. Reproduction and distribution of any of its parts is prohibited other than for personal and non-commercial use only. The sewing rules for commercial use (such as making clothes to sell) can be found on our website. Please don't hesitate to contact us to agree even a better deal. You acknowledge that by breaking any of the above conditions, you might be in violation of the Intellectual Property Law which could result in legal proceedings against you.

5

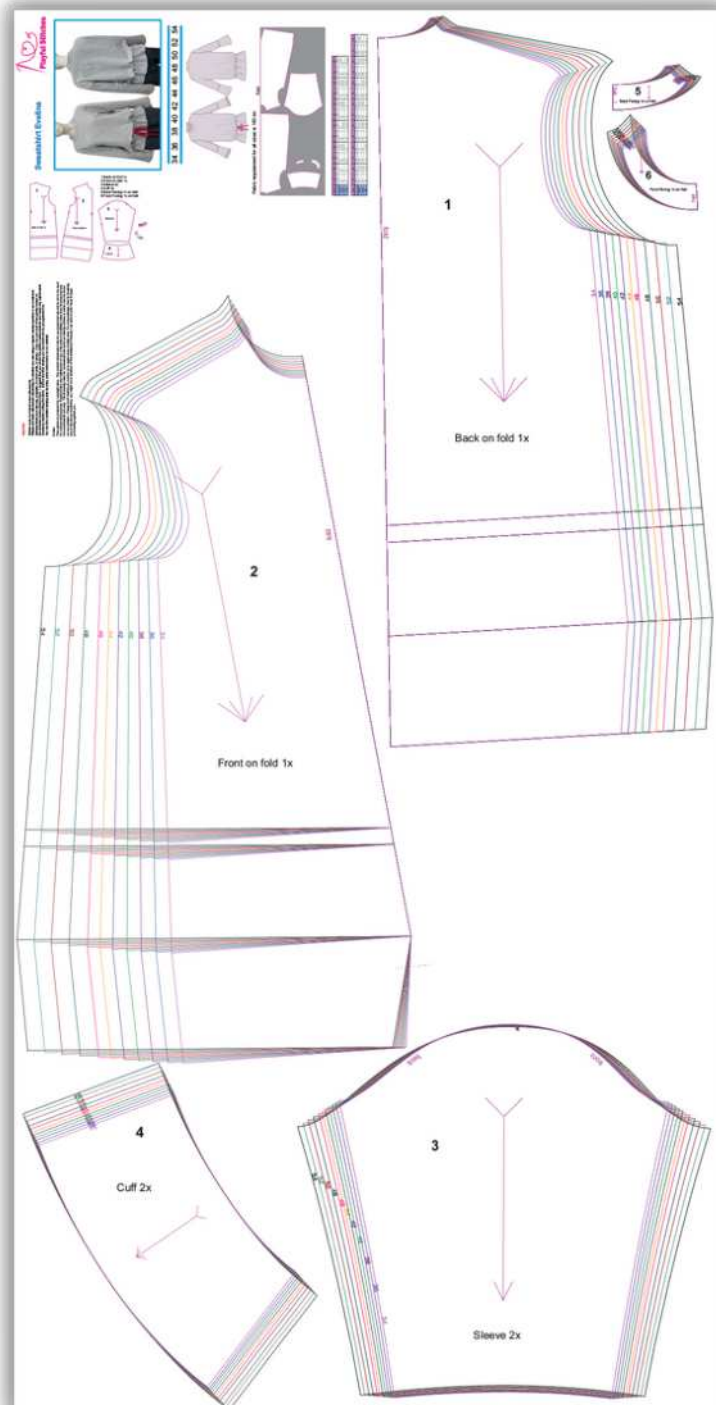
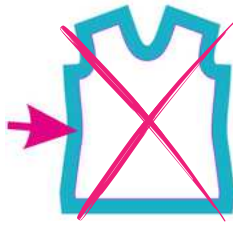
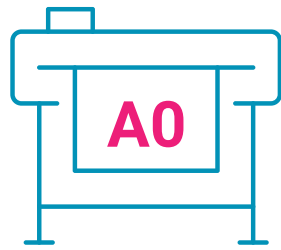


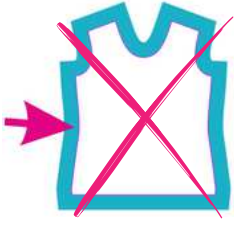
3 4

50 48 46 44 42 40 38 36 34

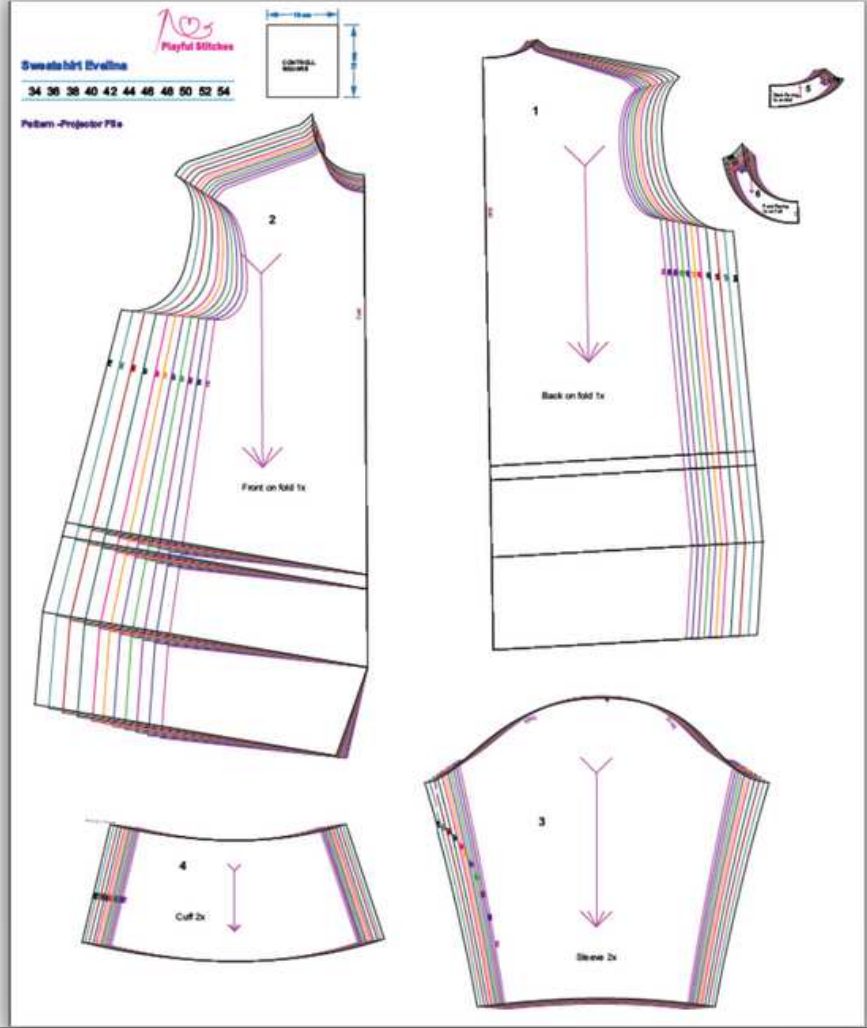
7 8

# File A0+ 845x1650

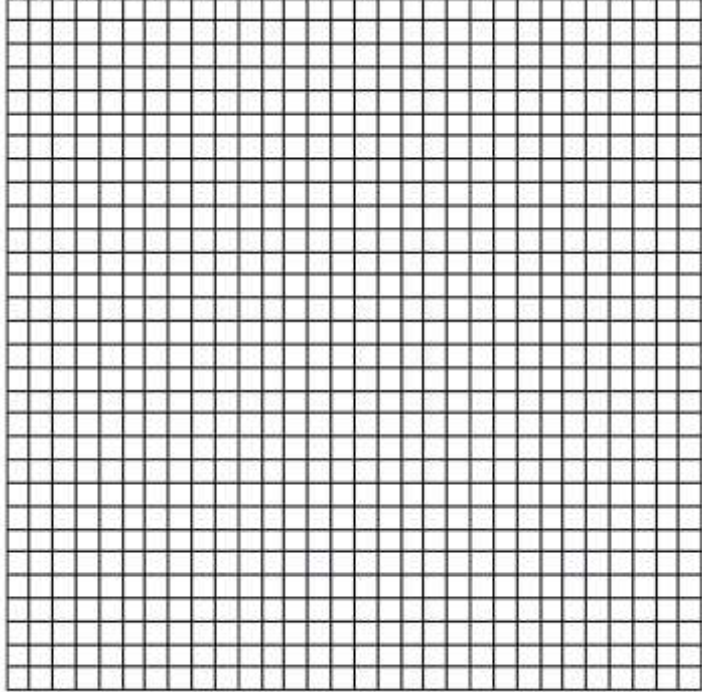




# Projector

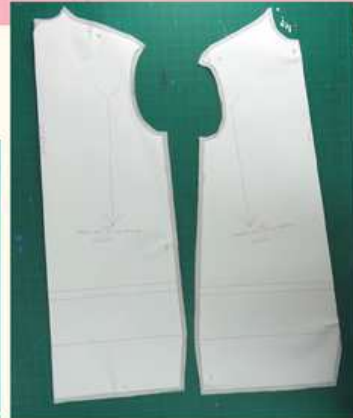
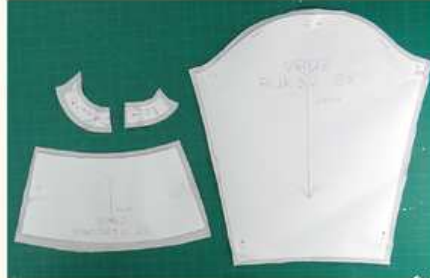


3x3 cm 30x30 cm 60x60 cm



## Cutting

- Trace pattern pieces on the fabric folded right sides together.
- Trace on the wrong side of the fabric.
- Add seam allowances.
- Cut out.



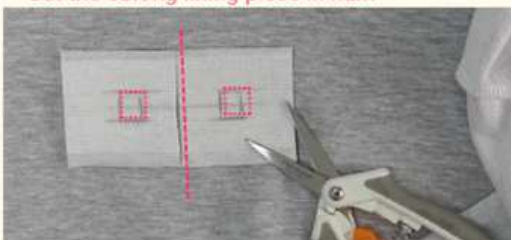
## The Front

- Stitch the dart on the hem allowance by folding it right sides together and overlock.



## Bottom edge

- Place the lining oblong piece at the centre of the garment front and at the centre of the drawstring casing, right sides together.
- Sew around the marked squares.
- Cut the oblong lining piece in half.



- Cut out the centres of the squares, leaving about 2 mm seam allowances.
- Clip the corners of the squares right to the stitching line. **Be careful not to cut through the line of stitching.**

