

Sewing instructions

- 1 - Reconstruction of the front and the back pieces

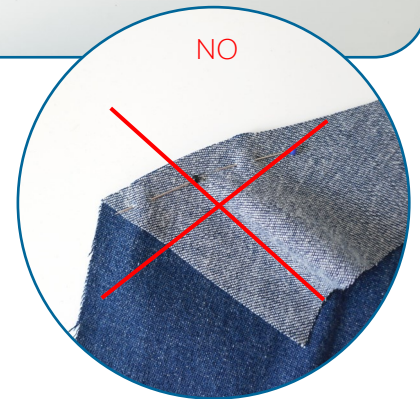
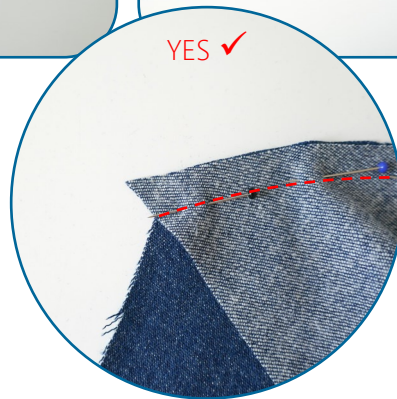
Go to [step 6 on page 8](#) if you make the front and the back in one piece.

Right sides together, pin and stitch each front to the corresponding side piece. (1)

Lay the seam allowance against the front piece and iron. (2)



When pinning, make sure the ends of the stitching lines match each other:



Right sides together, pin and stitch each back yoke to the corresponding back piece. (3)

Lay the seam allowance against the back yoke piece and iron. (4)

