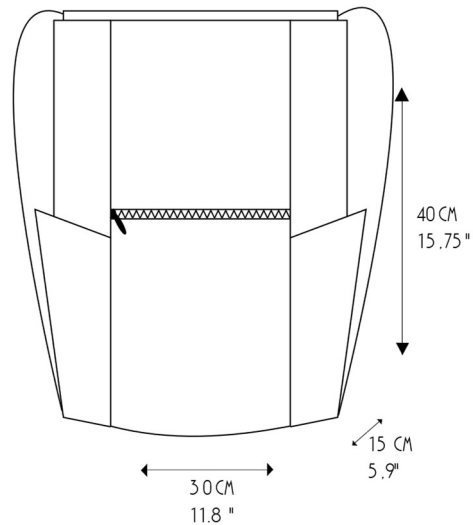


Before starting, please read all instructions.

Finished backpack size:

40 cm high x 30 cm wide x 15 cm (height / width / bottom depth)

(15,75 x 11,8 x 5,9")



The backpack requires:

- contrasting fabric – 50 cm width 140 cm (19,7" width 55")

- fabric with print – 30 cm width 140 cm (11,8" width 55")

- lining fabric – 40 cm width 140 cm (15,8" width 55")

Note: more fabric may be required if using a directional print.

- zipper size 3 mm (No 3) or 5 mm (No 5), length 24 cm/9,4" (length of teeth/spiral)

- mediumweight interfacing, iron-on, e.g. Ronofix, RONARFIX, fusible fleece, 100 g/m² or more – 15 cm width 80 cm (5,9" width 31,5")

- lightweight interfacing, iron-on e.g. Novoplast, Vlieseline, 30 to 60 g/m² - 60 cm width 90 cm (23,6" width 35,4")

- string/strap/cord (approx. 1 cm/0,4") – 360 cm/141,7" (2 x 180 cm/70,9")

- threads

- common sewing supplies

2.5. Exterior assembly

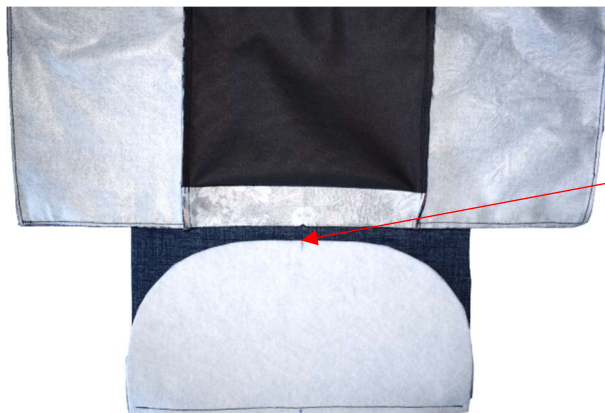
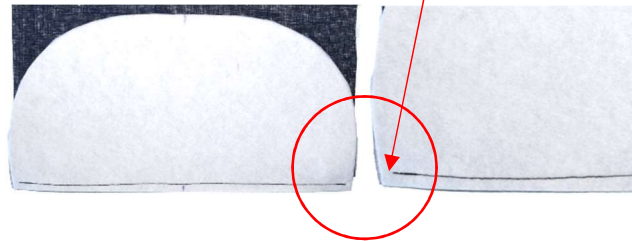
Back and bottom panel



Sew the bottom panel to the back panel. Place both pieces right sides together and line up the bottom edges.

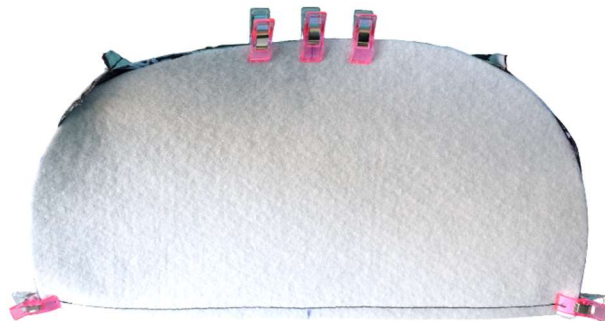
Clip and sew together.

Do not sew all the way to the edges, start approx. 0,5 cm/0,2" from the edge and end the seam again approx. 0,5 cm/0,2" before you reach the end of the fabric pieces.



To the curved part of the bottom panel sew the front part.

Mark the center on both parts.



Clip the parts right sides together, centers and corners/ends first. Then clip gradually along the curve of both sides. Align the fabric pieces so that they fit together. Use enough clips/pins.

