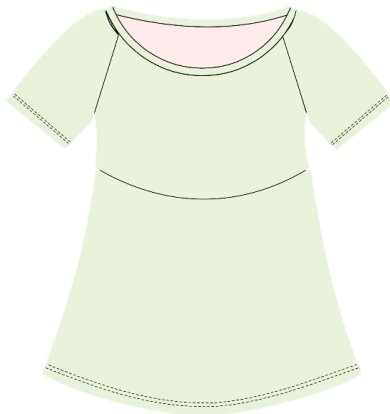
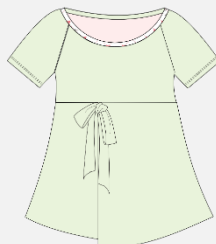
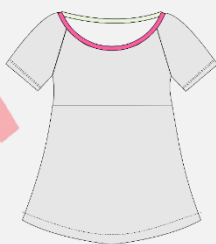
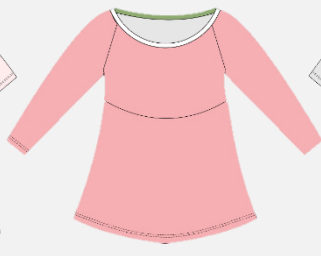


Shirt Nora



Sectional drawing :



#shirtnora

Art.-Nr: 1-E-40

Size: 34-46

Level:



Sewing instructions - pattern



Shopping list Shirt Nora

Material

- Bi-elastic jersey
- Seam tape (shaping tape) or rest of Vliseline for neckline
- Optional ribbon or satin ribbon for model 4
- Optional button or bow for decoration

Fabric consumption 1,40m fabric width

For all sizes	34-46
Shirt Short sleeve	1,10m
Shirt Long sleeve	1,60m

Table of contents:

Licence to use	page 4
Adjusting the sewing machine	page 5
Finding the right size / Adjusting the cut	page 6
Technical drawing/cutting plan	page 8
Cutting	page 11



Licence of use

You will receive a usage licence for each purchased product (pattern / embroidery file / ebook).

Commercial use

All self-made products from our patterns/embroidery files/e-books may be sold on a small scale (50 pieces). However, we insist that we are named as the manufacturer of the pattern/embroidery file/e-book with our name "TOSCAminni Schnittmanufaktur" as well as our internet address: www.toscaminni.de.

The customer may only edit and use the contents beyond the scope stated with the consent of the respective rights holder. If you have any questions, please contact us at info@toscaminni.de.

Copyright

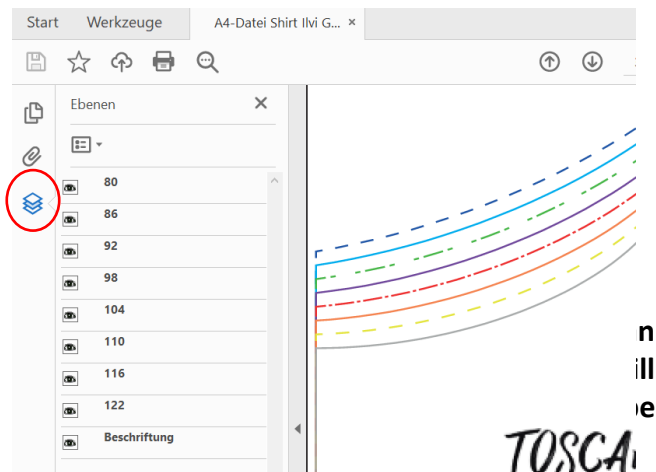
All products from our online shop have been designed and created by us. Our patterns / embroidery file / ebook are protected by copyright and may not be sold, given away, copied or altered.

We own the sole copyright unless expressly stated.

Cut on layers

Each size is saved on its own layer. This makes it possible to show only the sizes you actually want to print. For this function you need Acrobat Reader, which you can download free of charge from the Internet.

Click on the layer symbol in Acrobat Reader and show or hide sizes as you wish or hide.



Lines are drawn around the sheets with rows and pages, so you can use these as a guide when gluing them together.

Tips for beamer users:

Improve the contrast when projecting on dark materials by using the following setting:

File / Edit / Settings / Accessibility (or Shortcut Ctrl+K

activate the check mark "Replace document colours

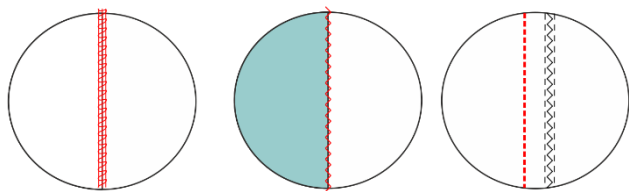
- deactivate the checkmark "Change colour of black text or vector graphics only".



Set the sewing machine to "jersey compatible":

Sewing with the overlock

The easiest way to sew is with an overlock. Make sure you set your overlock differential correctly to prevent the jersey from curling.



A great [>>Video](#) by the way, you can find this at Makerist

If you are sewing with a sewing machine, we recommend that you first sew the seams with a small backstitch (length 2-2.5) and then overcast both layers with an overlock stitch.

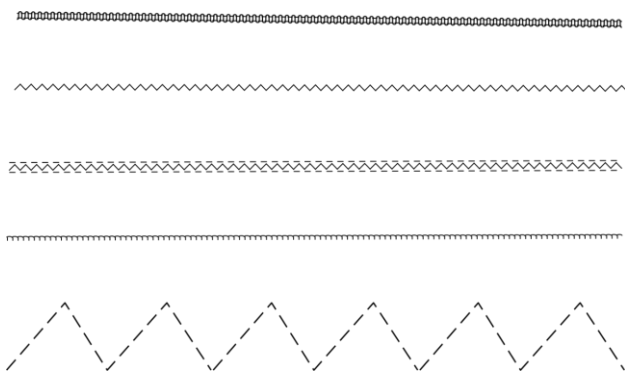
Sewing with the sewing machine

There are also sewing machine feet that have a small cutter built in and also cut the fringe. For jersey you should use an elastic stitch. There are many elastic stitches available with the sewing machine.

Make sure you use the right needles, there are special needles for jersey.

If you don't have an overlock, you can overcast the fabric with a zigzag stitch.

Your sewing machine probably has stitches like this or similar. The triple zigzag stitch is great for elastic hems and for sewing underwear - it is very decorative and durable with the right thread.



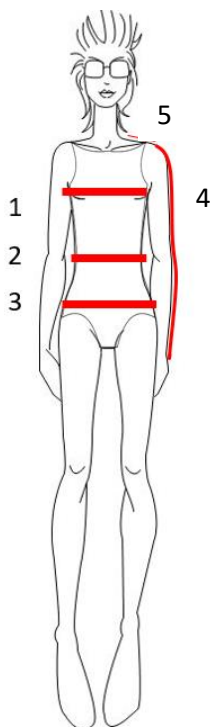
Do you know the top feed foot?

Top feed feet are popular for sewing velvet, plaid or striped fabrics so nothing shifts.

What may not be so well known, it is also great for jersey. With a top feed foot, both the bottom layer of fabric and the second layer on top are fed evenly and so the jersey does not curl.



Find the right size



1 Bust measurement:

The bust is measured horizontally around the body. The tape measure is placed around the highest part of the chest and over the shoulder blades/back.

2 Waist measurement:

The tape measure is placed loosely around the waist.

3 Hip measurement:

The hip is measured around the strongest point

4 Arm length:

The arm length is measured with one arm slightly bent, over the elbow to the wrist

5 Shoulder width:

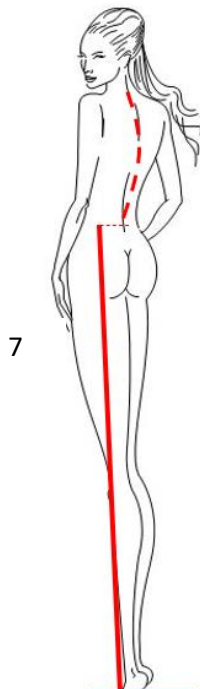
From the base of the neck to the ball of the arm

6 Back length:

Measure from the base of the neck to the waist

7 Side length:

Measure the length from the waist to the floor



Ladies measurement chart

Size	34	36	38	40	42	44	46	48	50	52	54
Bust size	80	84	88	92	96	100	104	110	116	122	128
Hip size	86	90	94	98	102	106	110	116	122	128	134

Information on fit / work preparation

With an ebook or a paper pattern, no matter what brand, you buy a ready-to-wear pattern. This means that you have to adapt your own measurements to this cutting system.

The bust and hip circumference are decisive for the size selection. The cut is designed for a body height of 1.68m.

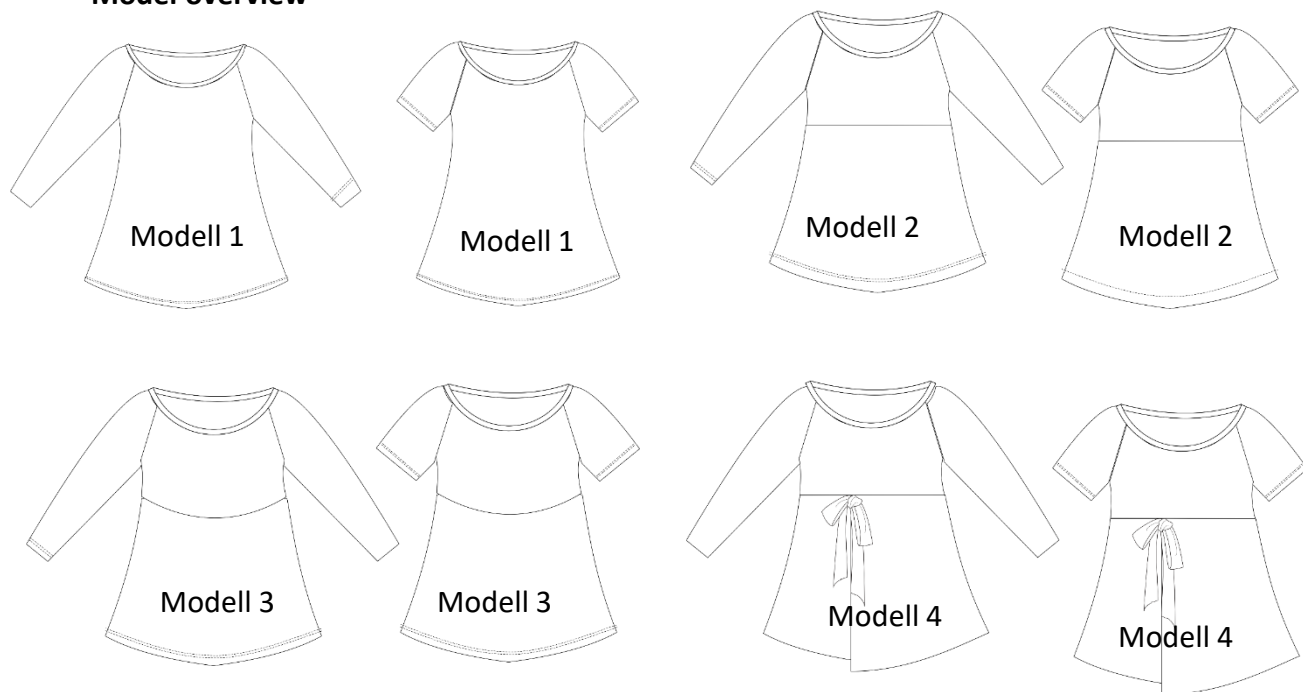
Change length: Measure the length from the shoulder point to your desired length and compare it to the paper cut.

Check sleeve length: Check if the sleeves are long enough for you, measure on the slightly bent arm.

Check bust/waist: Check if the width fits you, the shirt has an extra width of 4cm.



Model overview



Care instructions:

Cutting plan model 1

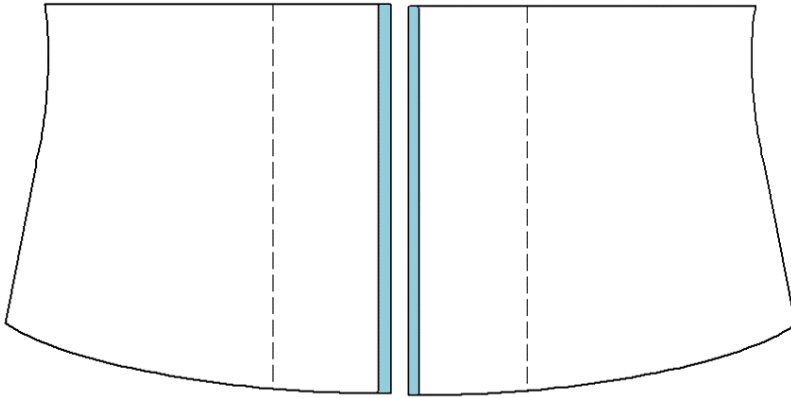


Generally you should wash the fabrics before sewing in the same way as you will wash the garment later (hand wash / machine wash / tumble dry).

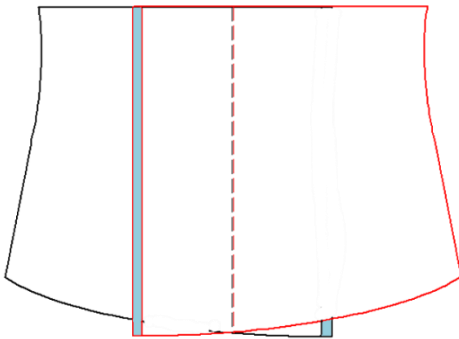
Outer fabric	Cutting
Front part	1 x on the fold
Back part	1 x on the fold
Sleeves (short or long)	2 x opposite
Stripes f. Neckline	1 x on the fold
Strips for neatening the hem	2x (2cm wide) Length in each case according to the width of the front and back part at the hem end
Note: optionally, the hem can also just be pressed over and topstitched.	

The pattern includes 1cm seam allowance (also hem)



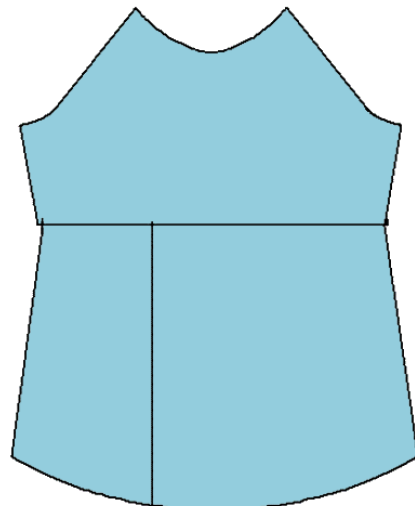
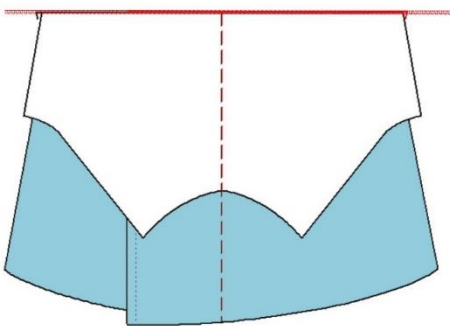


For the wrap shirt, first press the seam allowance to the wrong side on the front edge and sew.



Place the pieces on top of each other in the centre front so that the dotted lines are on top of each other.

Then sew both pieces as a yoke to the wrap piece - the slit remains open to create the wrap look.





For model 4 you can add a bow or a button for decoration if you like. Here we covered a button ourselves with fabric, which you can buy at Prym, for example, and made small ribbons from jersey.

In addition, the fabric was not quite enough, so we patched with a contrast fabric - it also looks pretty. Another way to play with the pattern was to take the stripes once across and once lengthwise.

You can also use a simple satin ribbon (see picture on the right).



Congratulations, you did it and you can be proud of yourself!

We would be pleased if you mark your works so that we can admire them.

Hashtags: #toscaminni #shirtnora

Are you on Makerist?

You can also show your work here in the [>>sewing show](#) - we would be happy if you link us here and rate the pattern.

Impressum:

Silvia Vogt
TOSCAminni-Schnittmanufaktur
Scheibenstraße 1
94557 Niederalteich
0160-4546016
www.toscaminni.de
info@toscaminni.de
USt-IdNr.: DE 247560793

www.toscaminni.de

