

OVERVIEW

BODY DIMENSIONS

PAGE 3

FINISHED DIMENSIONS

PAGE 4

MATERIAL

PAGE 4

STEP 1: PRINTING

PAGE 5

STEP 2: CUTTING

PAGE 6

STEP 3: SEWING

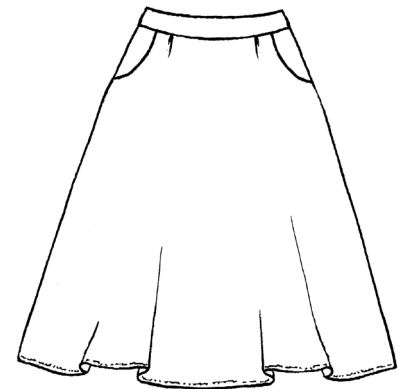
PAGE 7-11

WEB-TIPP

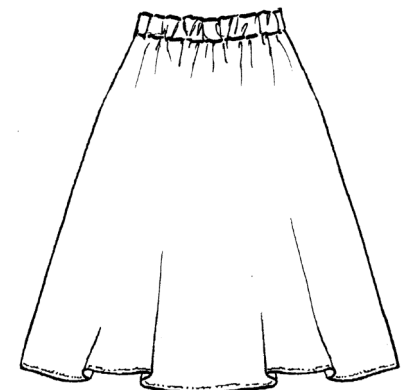
PAGE 12

PATTERN SHEETS

PAGE 13-33



FRONT



BACK

WE ARE STUDIO SCHNITTREIF

Modern and straightforward, that's STUDIO SCHNITTREIF. Since 2012, we are developing professional sewing patterns and easy-to-follow photo instructions for sewing beginners and all those who have loved sewing for a long time!

STUDIO SCHNITTREIF stands for simple, Scandinavian-inspired fashion that comes without big frills. Contemporary, simple shapes with fine details.

Have fun discovering our patterns!



Brid and Aya

MISS CARRY - ELEGANCE MEETS COMFORT



MISS CARRY makes every day that little bit livelier. The flared, buttonless midi skirt is the perfect mix of feminine elegance and casual comfort. The waistband fits around the natural waistline and emphasises it with a smooth front design. The gathered section is at the back and held together with an elasticated waistband. The rounded pockets are perfect for all the little things you need to carry with you. Two hem lengths will have you wanting to stitch MISS CARRY all over again!

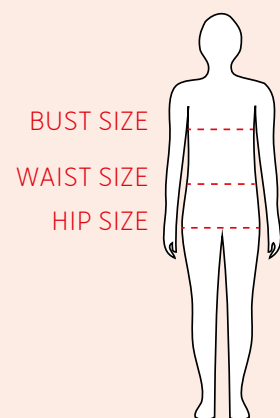
SIZES - BODY DIMENSIONS

WAIST SIZE:

XS	63 CM	24,80"
S	64 CM	25,19"
M	72CM	28,34"
L	80 CM	31,50"
XL	89 CM	35,04"
XXL	101 CM	39,76"

HIP SIZE:

XS	81 CM	31,89"
S	89 CM	35,04"
M	96 CM	37,80"
L	103 CM	40,55"
XL	111 CM	43,70"
XXL	122 CM	48,03"



THE MEASUREMENTS ARE TAKEN HORIZONTALLY AROUND THE BODY AT THE POINTS INDICATED.

Crucial aspects of this model are the waist and the hip size . The values in the table above are the body measurements used as a basis for calculating sizes, based on a height of 164-172 cm for sizes S-XXL.

SIZES - FINISHED DIMENSIONS

MEASUREMENTS IN CM	XS 146/152	S 34/36	M 38/40	L 42/44	XL 46/48	XXL 50/52
WAIST SIZE WITHOUT ELASTIC WAIST	80	88	96	104	114	126
SIDE LENGTH MIDI	69,5	74,5	74,5	74,5	74,5	74,5
SIDE LENGTH KNEE-COVERED	57,5	62,5	62,5	62,5	62,5	62,5
MEASUREMENTS IN INCH	XS 146/152	S 34/36	M 38/40	L 42/44	XL 46/48	XXL 50/52
WAIST SIZE WITHOUT ELASTIC WAIST	31,50"	34,65"	37,79"	40,94"	44,18"	49,60"
SIDE LENGTH MIDI	27,36"	29,33"	29,33"	29,33"	29,33"	29,33"
SIDE LENGTH KNEE-COVERED	22,44"	24,60"	24,60"	24,60"	24,60"	24,60"

The measurement chart contains the measurements of the finished item of clothing. This makes it easy to check how wide or how long the model is. **IMPORTANT:** The waist circumference of MISS CARRY without elasticated waistband is also the slip width! Since the skirt is buttonless, it must be able to be pulled over the hips. Please remember this when choosing the size! The hem length can be adjusted as desired. The length and sleeve length can also be adjusted as desired.

MATERIAL

Soft-falling woven materials are ideal, such as viscose, Tencel, linen or light cotton. Since some materials shrink when washed, we recommend only working on pre-washed materials!

MEASUREMENTS IN CM	XS 146/152	S 34/36	M 38/40	L 42/44	XL 46/48	XXL 50/52
MIDI FABRIC WIDTH FROM 140	160	175	175	175	175	175
KNEE-COVERED FABRIC WIDTH FROM 140	140	155	155	155	155	155
VLIESELINE	10	10	10	10	10	10
MEASUREMENTS IN INCH	XS 146/152	S 34/36	M 38/40	L 42/44	XL 46/48	XXL 50/52
MIDI FABRIC WIDTH FROM 55,12"	62,99"	68,90"	68,90"	68,90"	68,90"	68,90"
KNEE-COVERED FABRIC WIDTH FROM 55,12"	55,12"	61,02"	61,02"	61,02"	61,02"	61,02"
VLIESELINE	3,94"	3,94"	3,94"	3,94"	3,94"	3,94"

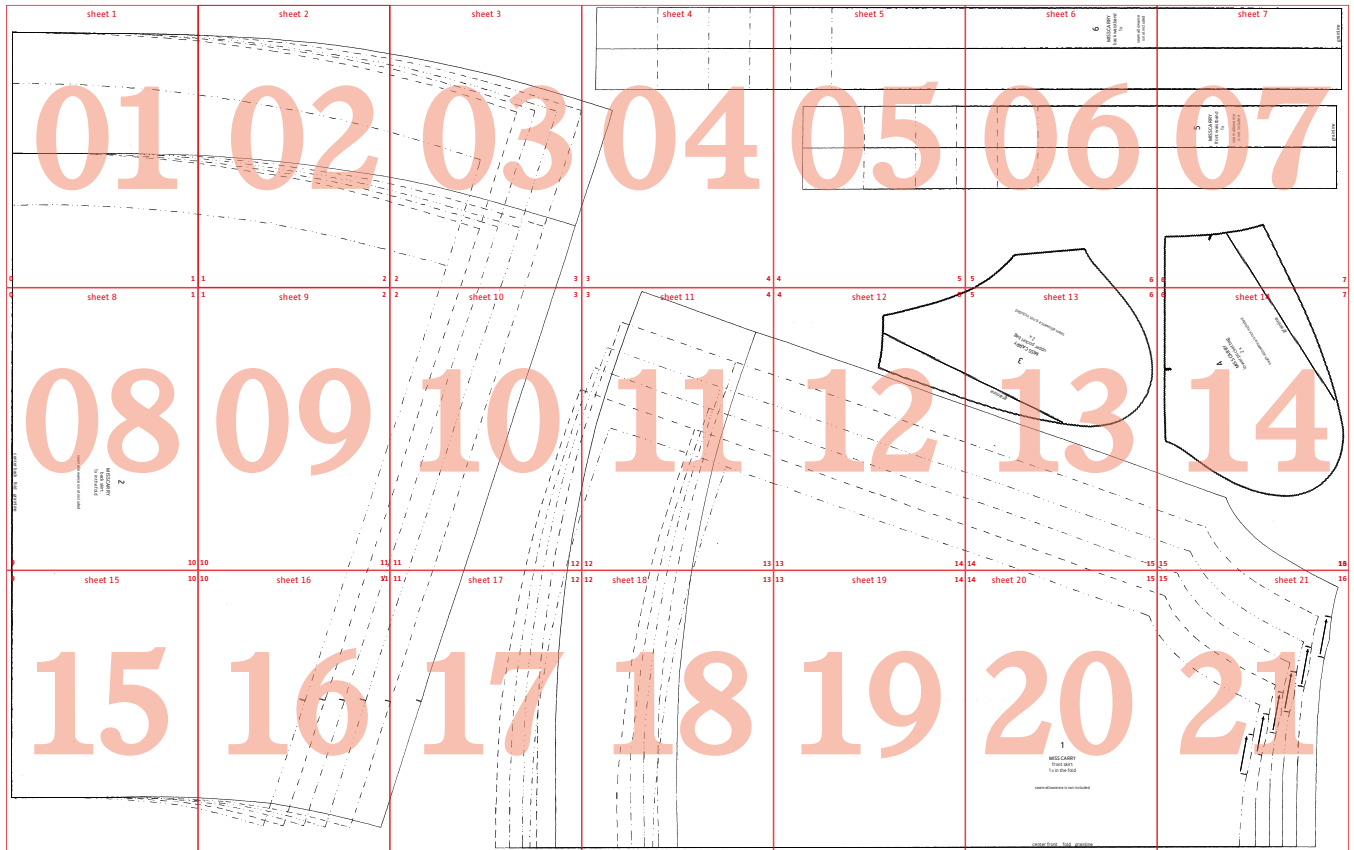
A 4 cm-wide elasticated waistband is also required. The length should be measured against the body. Since only the waistband at the back of the skirt is finished using elastic, a half waist circumference is usually sufficient.

STEP 1: PRINTING

We offer our ebooks in European Din A4 format or US Letter format. Before printing, please make sure that you have downloaded the correct version and that the printer is set accordingly.

To ensure the pattern parts print in the original size, please deactivate automatic page sizing in the print options before printing! To check print size: The test square on sheet 1 should be 5 cm x 5 cm (2" x 2").

The following sketch gives an overview of the positioning of the individual sheets:



The pattern is divided over 21 individual sheets. The sheets must FIRST be cut out along the red lines and then stuck together. The red numbers in the side corners indicate the corners that go together. Then the desired size should be traced, cut out or copied.

We recommend reading through the entire instructions manual before cutting!



Want to see more?

Have you acquired a taste for sewing and want to get to know all of our cutting patterns and instructions? Are you looking for inspiration or want to know what other people are making from our cutting patterns? Do you want to stay informed and not miss any news? Then visit our website:

- WEBSITE: WWW.STUDIOSCHNITTREIF.DE
- ONLINE-SHOP: WWW.STUDIOSCHNITTREIF.SHOP
- PINTEREST: WWW.PINTEREST.DE/STUDIOSCHNITTREIF/
- INSTAGRAM: WWW.INSTAGRAM.COM/STUDIOSCHNITTREIF/
- FACEBOOK: WWW.FACEBOOK.COM/STUDIOSCHNITTREIF/

All rights to these instructions belong to Brid Fichtner and Anja Müssig. The e-book may only be used for private use. It may not be used in the production of items for subsequent sale. Copying and circulation of these instructions, and mass production, is NOT permitted..