



Elwa

Creation of P'tite Peste

Crochet pattern by P'tite Peste • Elise Brocard



Copyright

©Copyright 2022 P'tite Peste. Elise Brocard – All Rights reserved. This pattern is for **personal use only**. You are not authorized to publish, reproduce, translate and modify all or part of this pattern and then share it on all existing social networks (Youtube, VK, Facebook, Instagram and others) and websites. You are not allowed to sell this pattern. You are not allowed to make videos showing all or part of the crochet process of this model and then share them on all existing social networks (Youtube, VK, Facebook, Instagram and others). You can publish photos of your realization from this pattern by mentioning " P'tite Peste " or " Elise Brocard ". You can sell the finished products, if they are made by you, in limited quantities and by mentioning "P'tite Peste" or "Elise Brocard".

Contact

Do not hesitate to contact me if you have any question about this pattern. I will be happy to answer you.
Send me your pictures of your finished Ava. I'd love to see your realization.

ptitepeste.amigurumi@gmail.com

www.instagram.com/ptitepeste.amigurumi/

www.facebook.com/ptitepesteamigurumi/

ptitepeste.etsy.com

[#ptitepesteamigurumi](https://twitter.com/ptitepesteamigurumi)

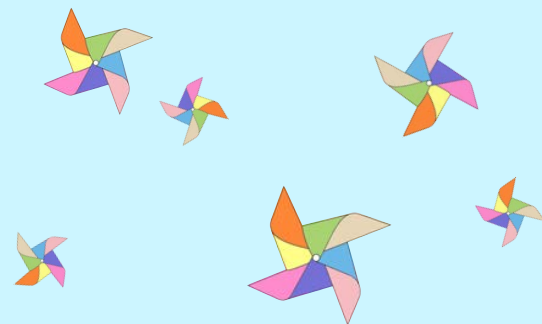
Note

- Ava is about 22 cm high using the materials mentioned below.
- It will be smaller or larger if you use a smaller or larger hook with the right thread for the size of your hook.

Materials

- 2 mm crochet hook
- 10 different colors suitable for 2 mm hook
- Embroidery threads black, brown or other (eye color), white and gold
- Stuffing
- Glue
- 2 safety eyes (7 mm)
- Tapestry needle
- Scissors
- Crochet pins and markers
- A toothpick (windmill)





Colors

Yarn and Colors Must-Have cotton:

- A cream - 002 Cream (25 g)
- B skin - 009 Limestone (25 g)
- C light pink - 046 Pastel Pink (25 g)
- D white - 001 White (20 g)
- E pink - 037 Cotton Candy (15 g)
- F purple - 056 Lavender (15 g)
- G green - 081 Lettuce (15 g)
- H blue - 064 Nordic Blue (15 g)

- I orange - 017 Papaya (15 g)
- J yellow - 010 (15 g)

Yarn and Colors Glamour 089 Gold thread (≈10 mètres)

Durable Embroidery thread:

- black - 1001 Black
- brown - 1012 Dark Brown
- white - 1000 White



Tips

- I crochet all the stitches in the shape of X. I explain how to do it on page 4.
- Each piece is crocheted in spiral rounds unless otherwise specified.
- I don't crochet in a chain in the traditional way. I explain how to do it on page 4.
- Be sure to keep a tight tension.
- Stuff firmly as you go along, unless otherwise indicated.
- All color changes for the legs and body should be at the back of the body.
- I apply the glue with a toothpick to avoid using too much glue.
- Ava can't stand on her own.
- This doll is not recommended for children under three years old.

Abbreviations (US termination)

- inc = invisible increase
- dc = double crochet stitch
- hdc = half double crochet stitch
- dec = invisible decrease
- st(s) = stitch
- slst = slip stitch
- ch = chain stitch
- sc = single crochet stitch
- rnd = round
- (...) = crochet all instructions between () into same stitch
- { } ... x = repeat instructions in brackets ... times
- (...) = total number of stitches in the round

